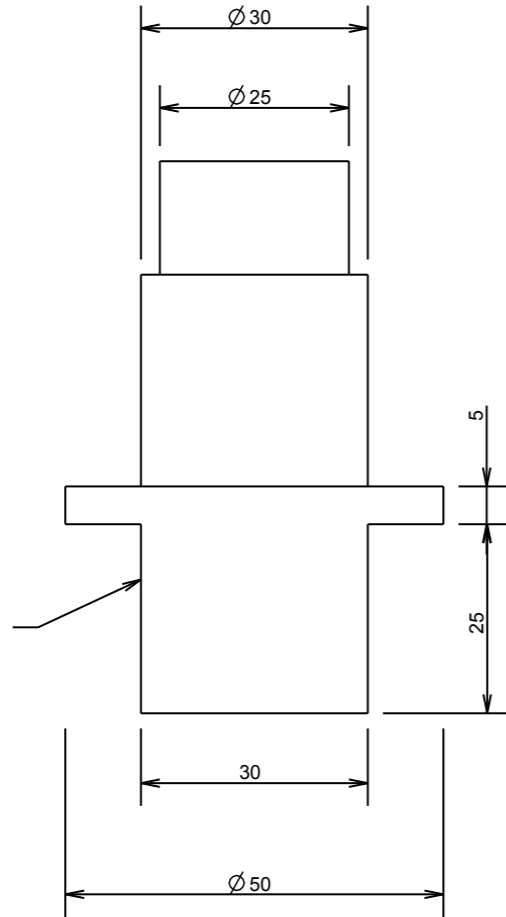
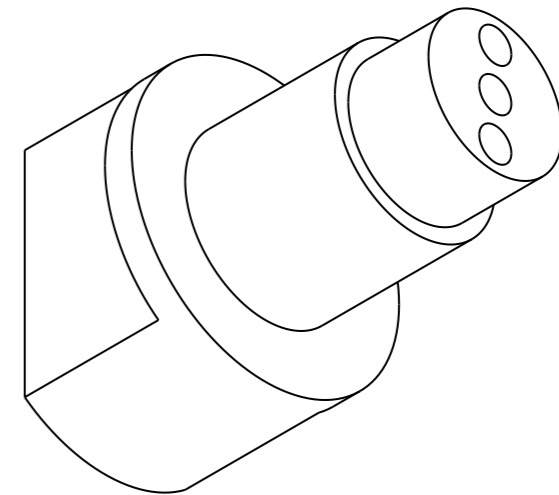
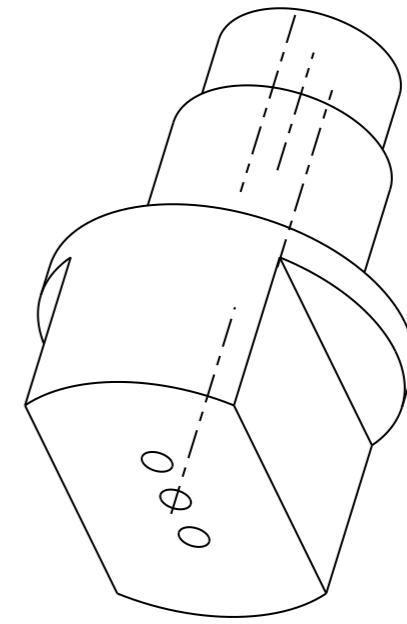
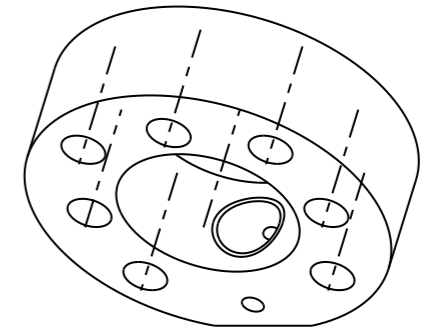
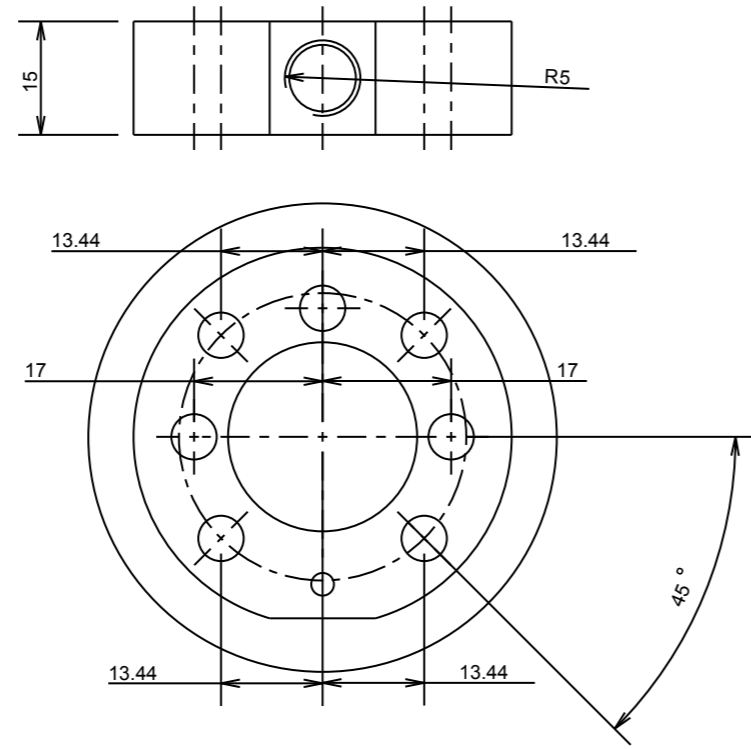


COUPE XSEC0001-XSEC0001



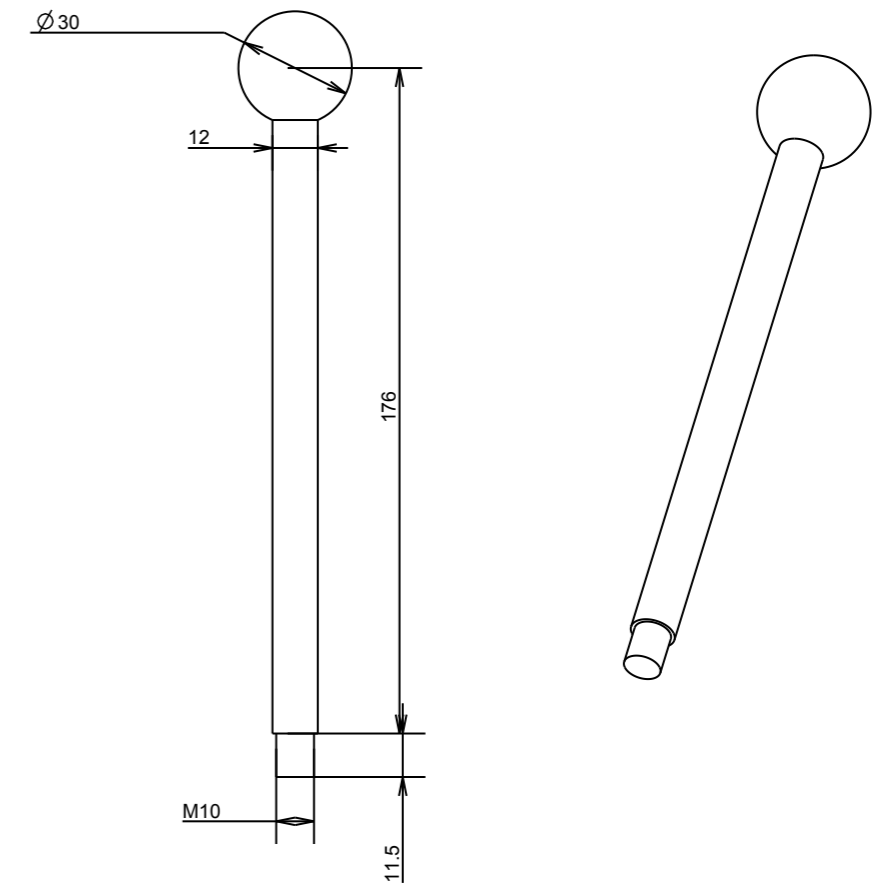
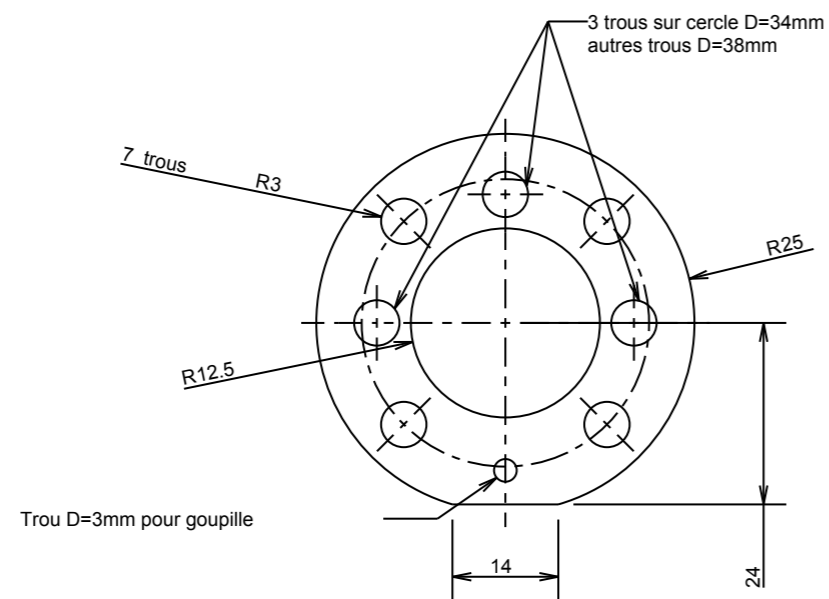
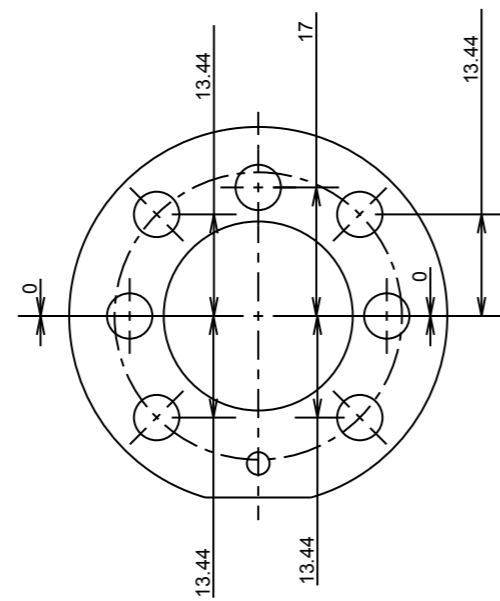
2 Plats fraisés
pour tenue dans un étau

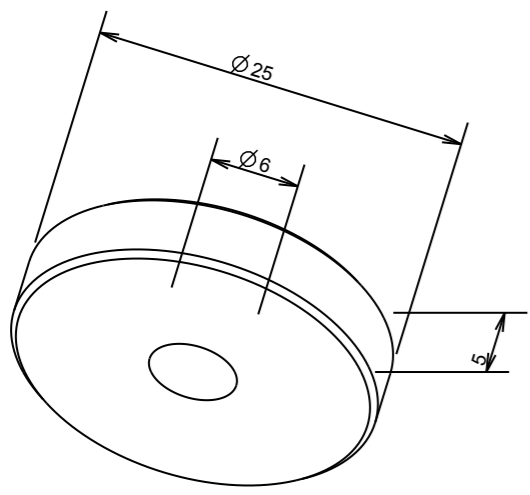




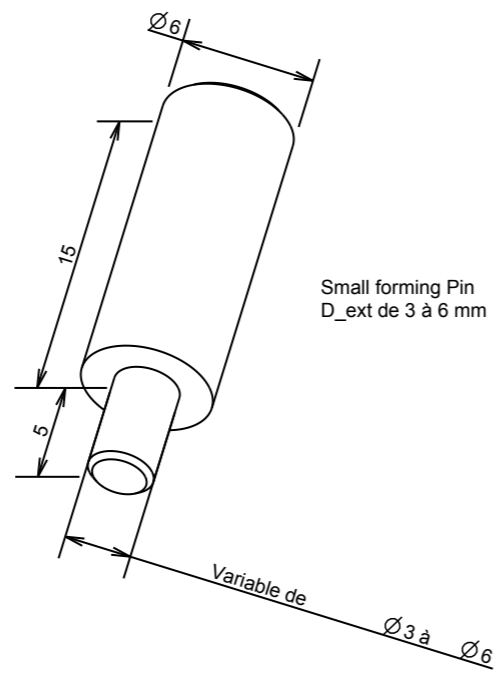
Torque Ring

Trous
 Les trous sont sur des angles remarquables (30°, 45°, 60°)
 Tracer les cercles supports D=34 mm et D=38mm
 Positionner par pointage X ou Y

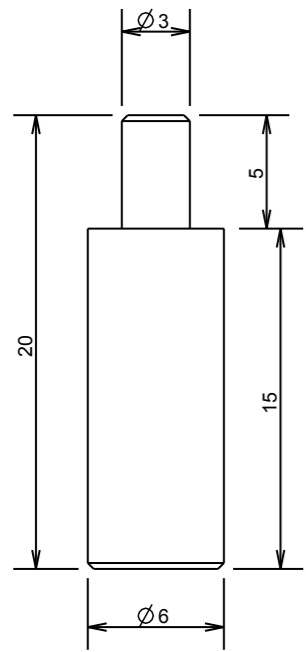
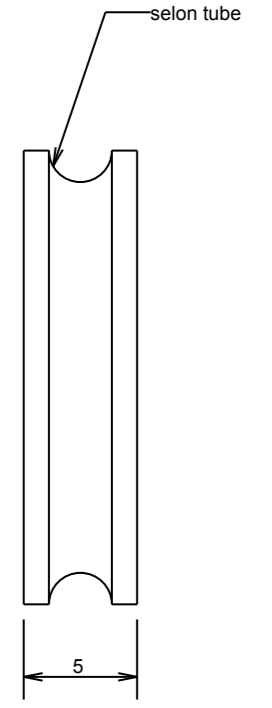
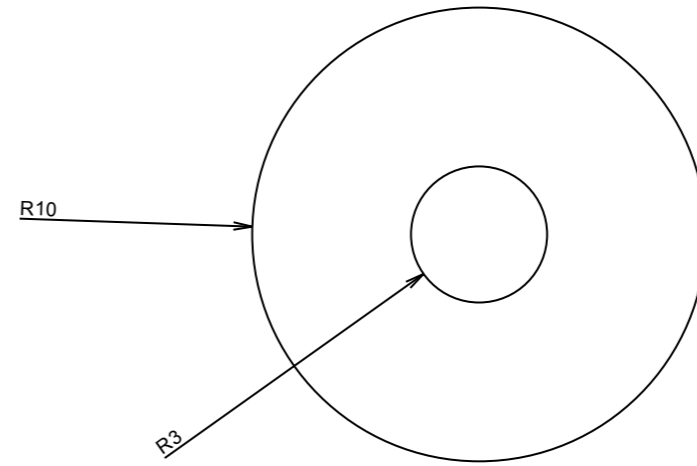




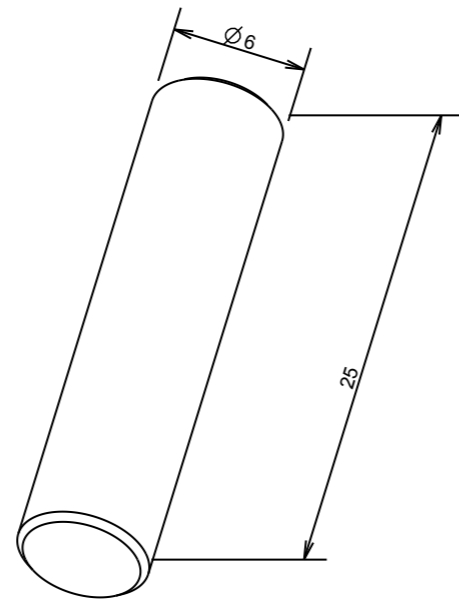
Forming Roller
Dext de 7 à 25 mm



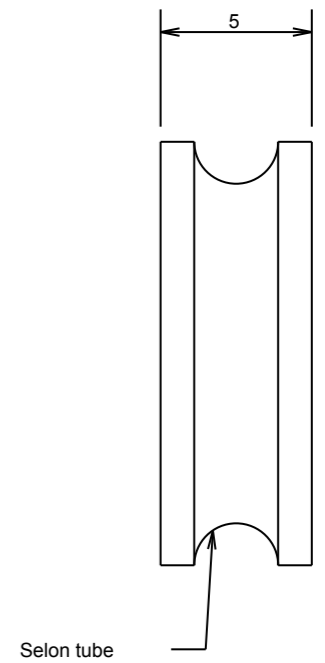
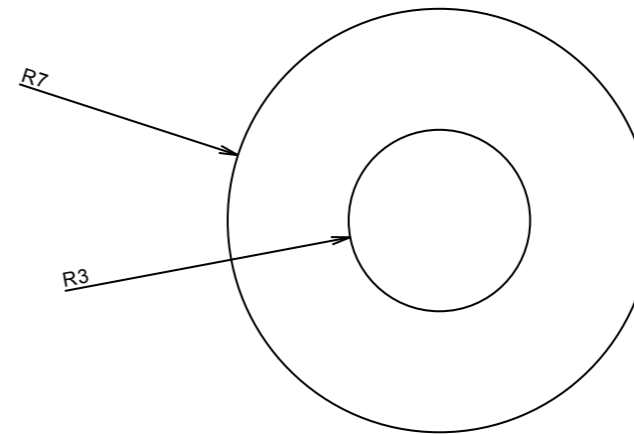
Small forming Pin
D_ext de 3 à 6 mm

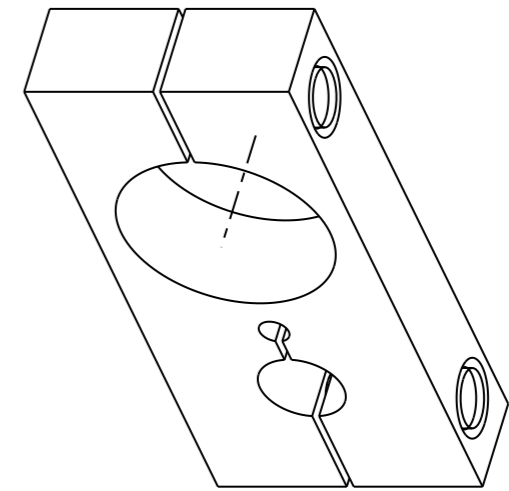
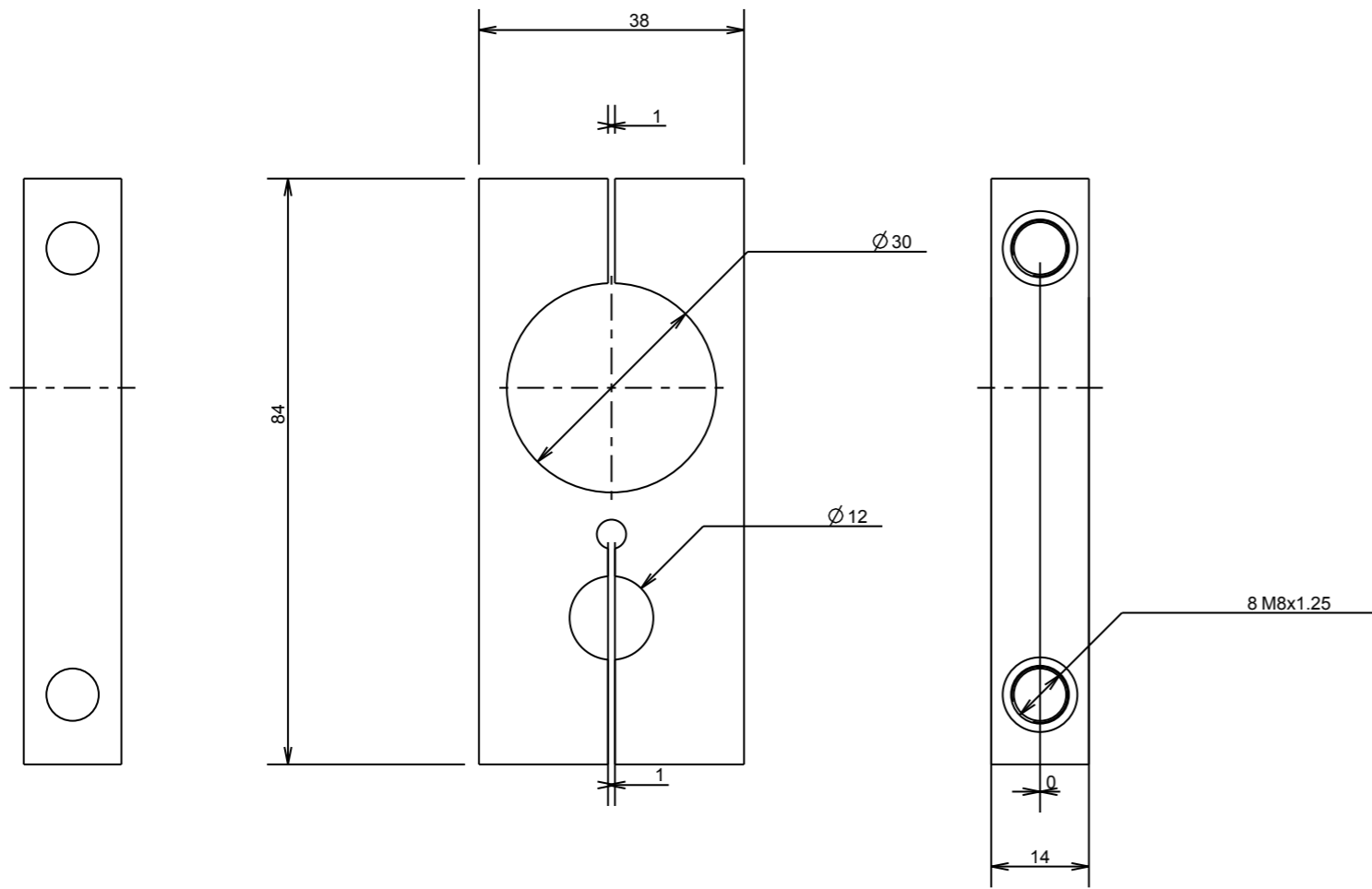


Angle stop



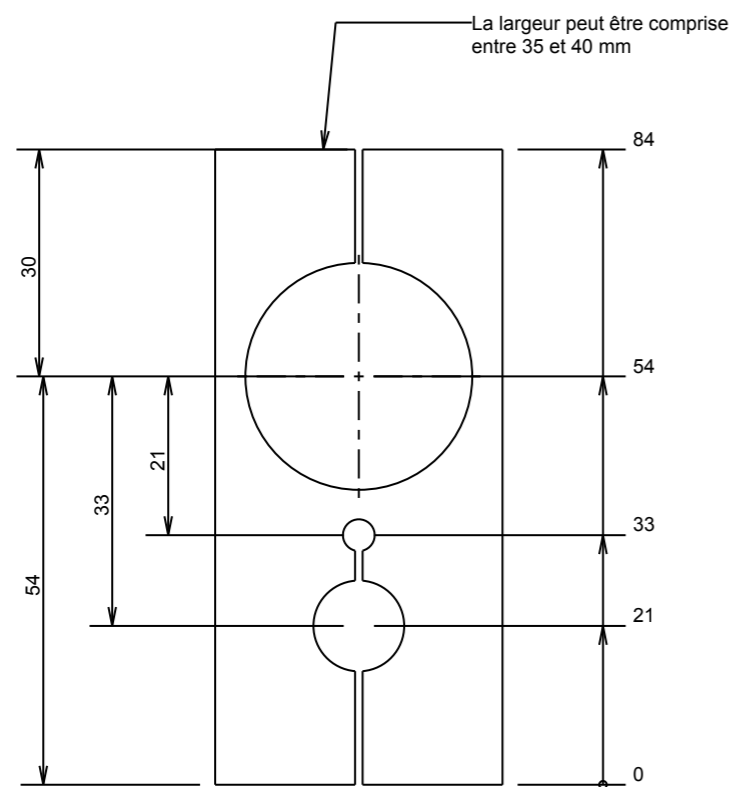
Basic Forming Pin



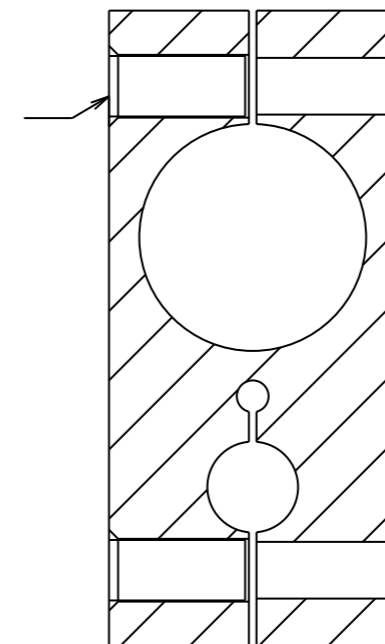


Angle Stop Clamp

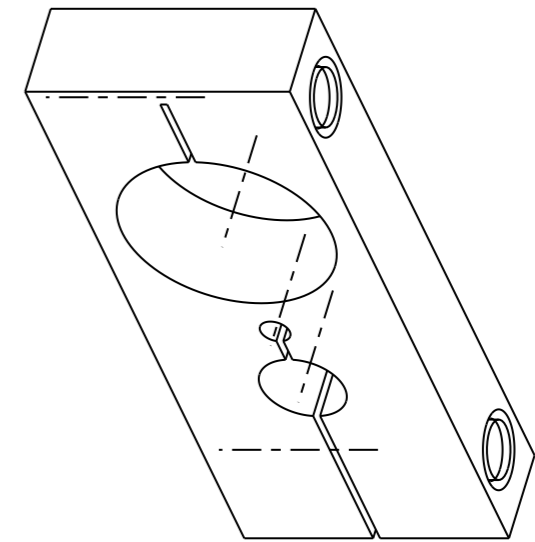
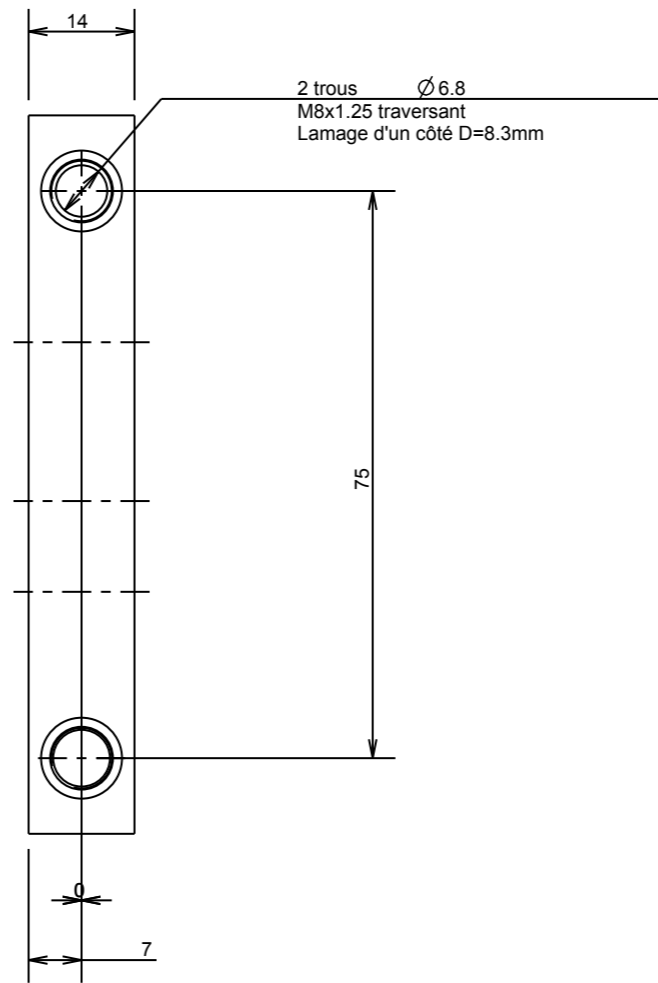
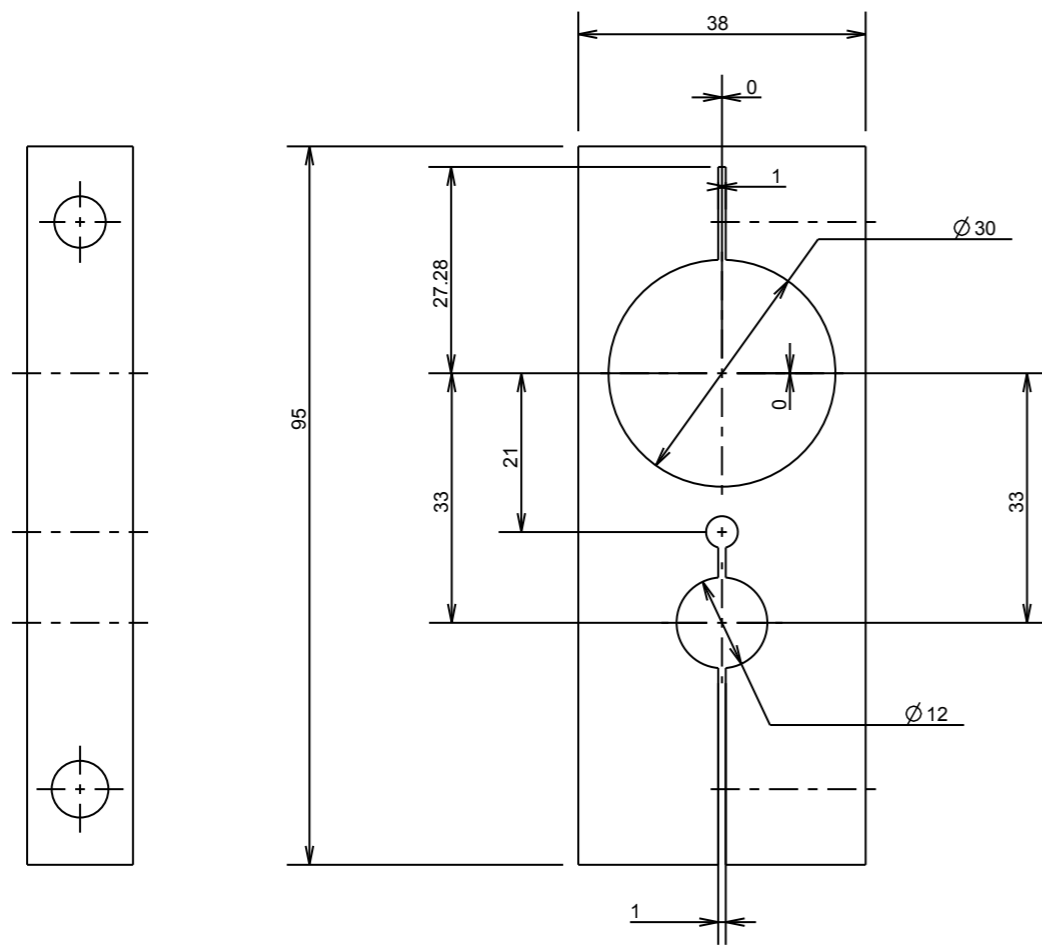
Vue auxiliaire pour traçage



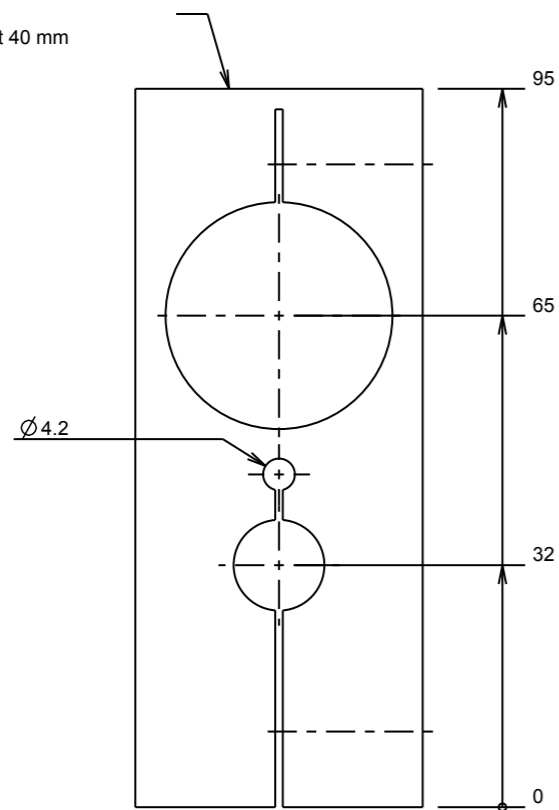
Filetage M8x1.25 traversant
Aléage D=8.3mm jusqu'à l'axe



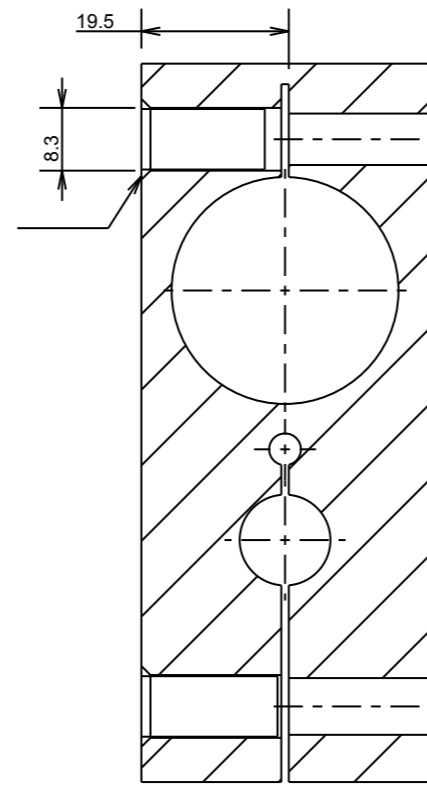
COUPE XSEC0001-XSEC0001



La largeur peut être comprise entre 35 et 40 mm



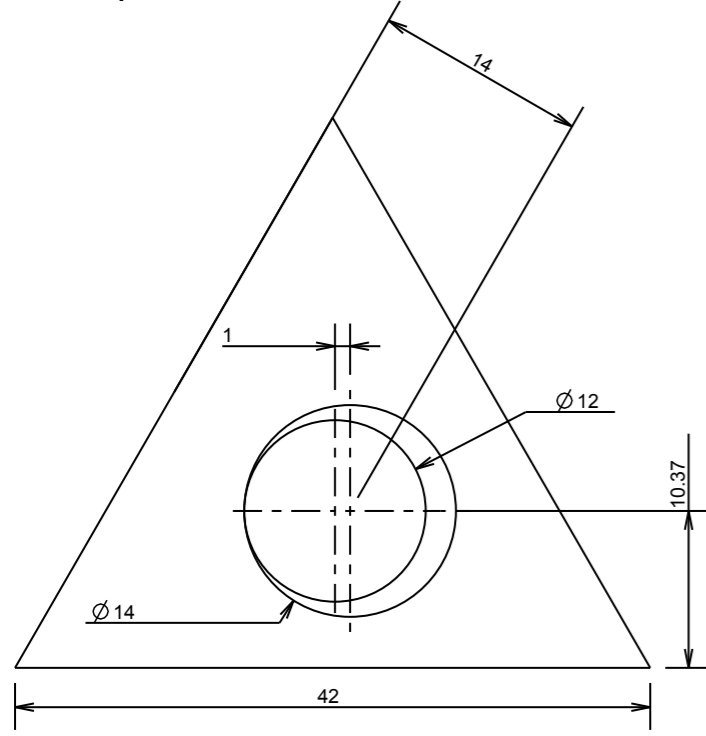
Détail du trou pour donner du jeu à la vis M8



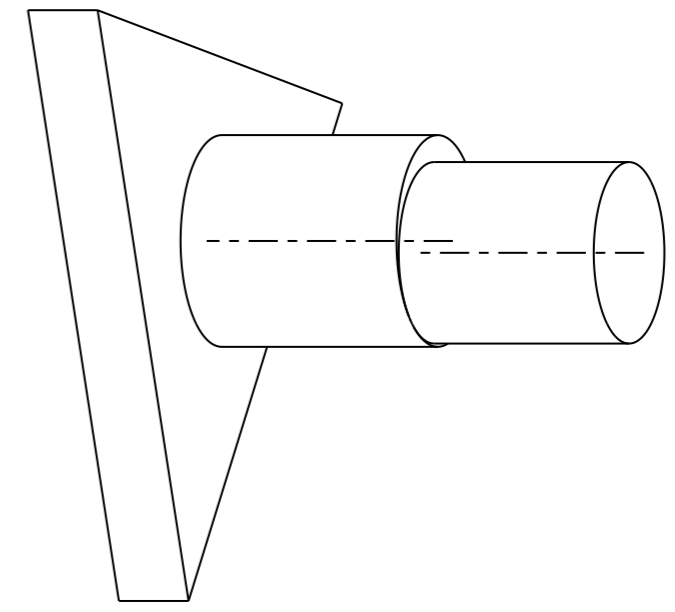
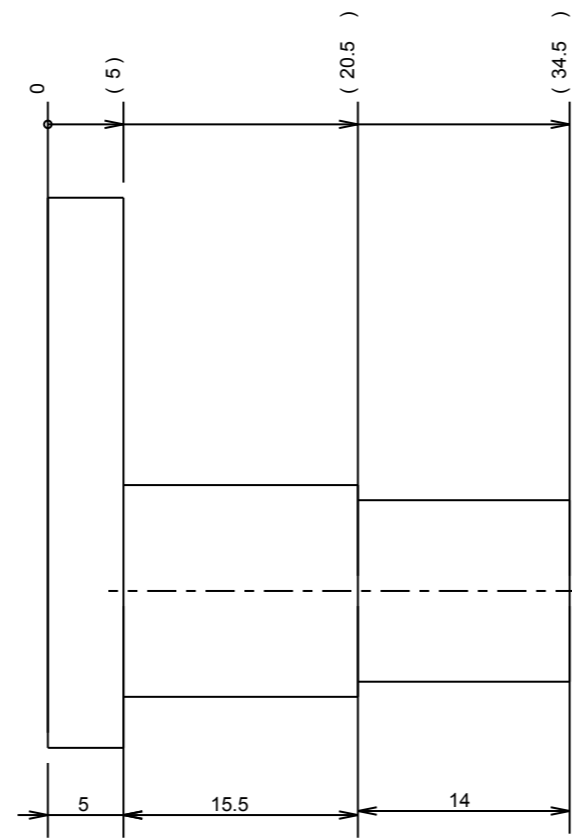
COUPE XSEC0001-XSEC0001

Stop plate clamp

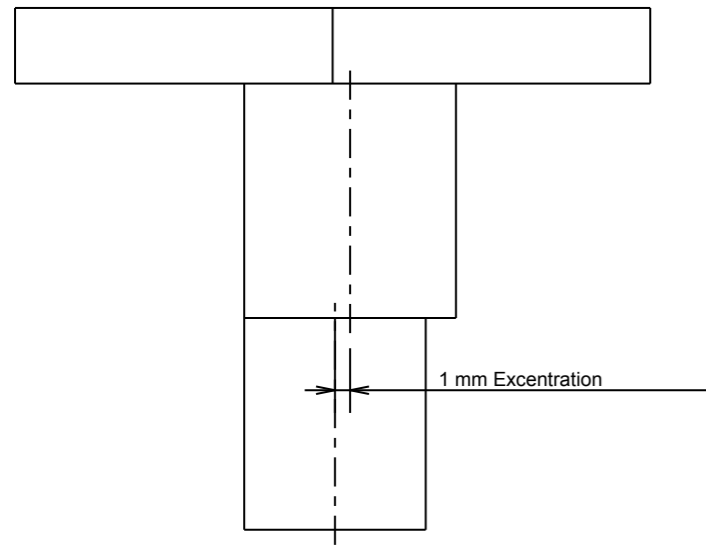
Stop Plate lefthand



ECHELLE 2.000

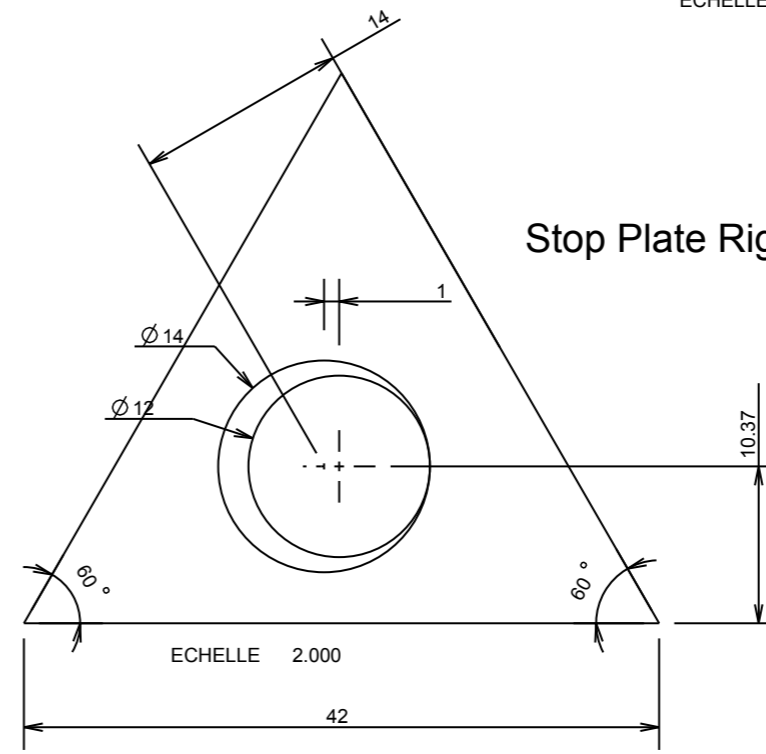


ECHELLE 2.000

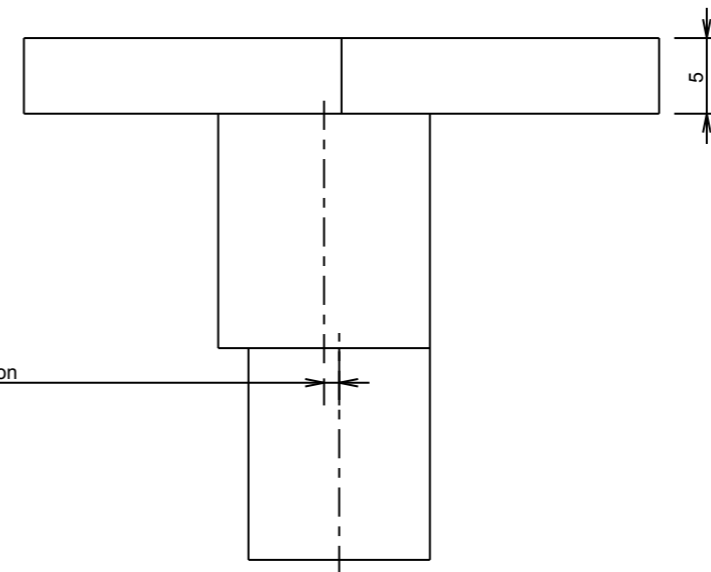


1 mm Excentration

Stop Plate Right Hand



ECHELLE 2.000



1 mm excentration

