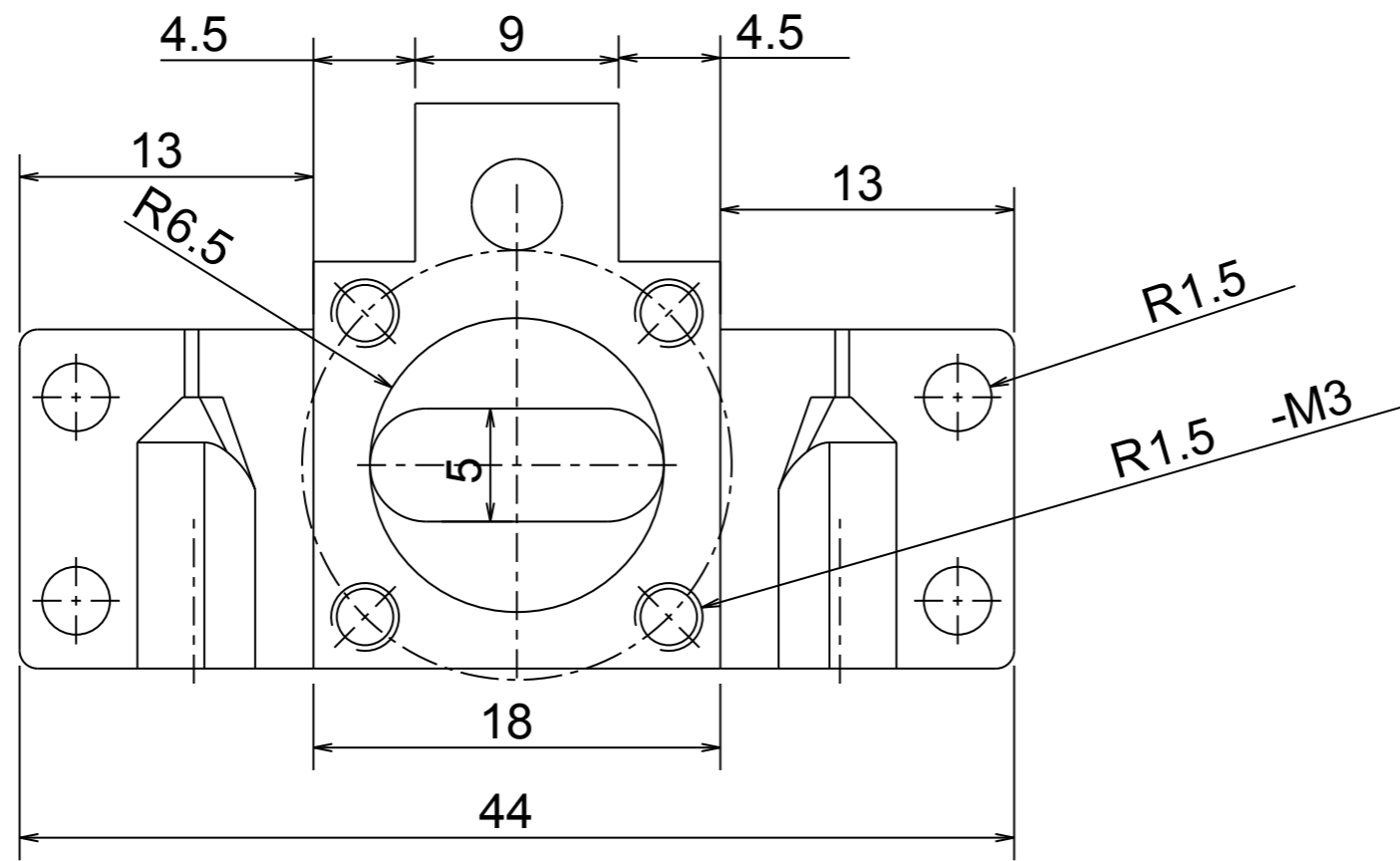
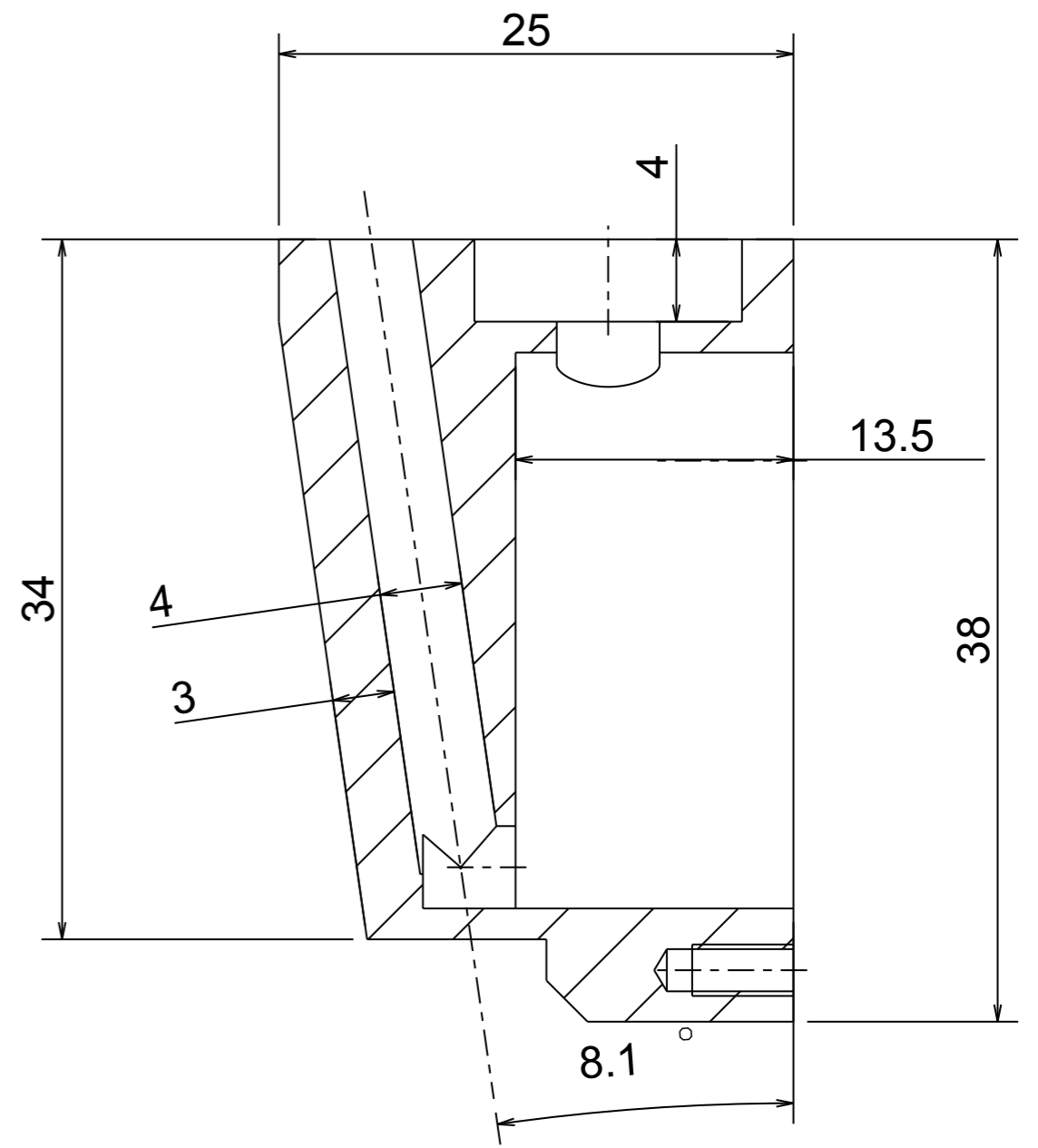
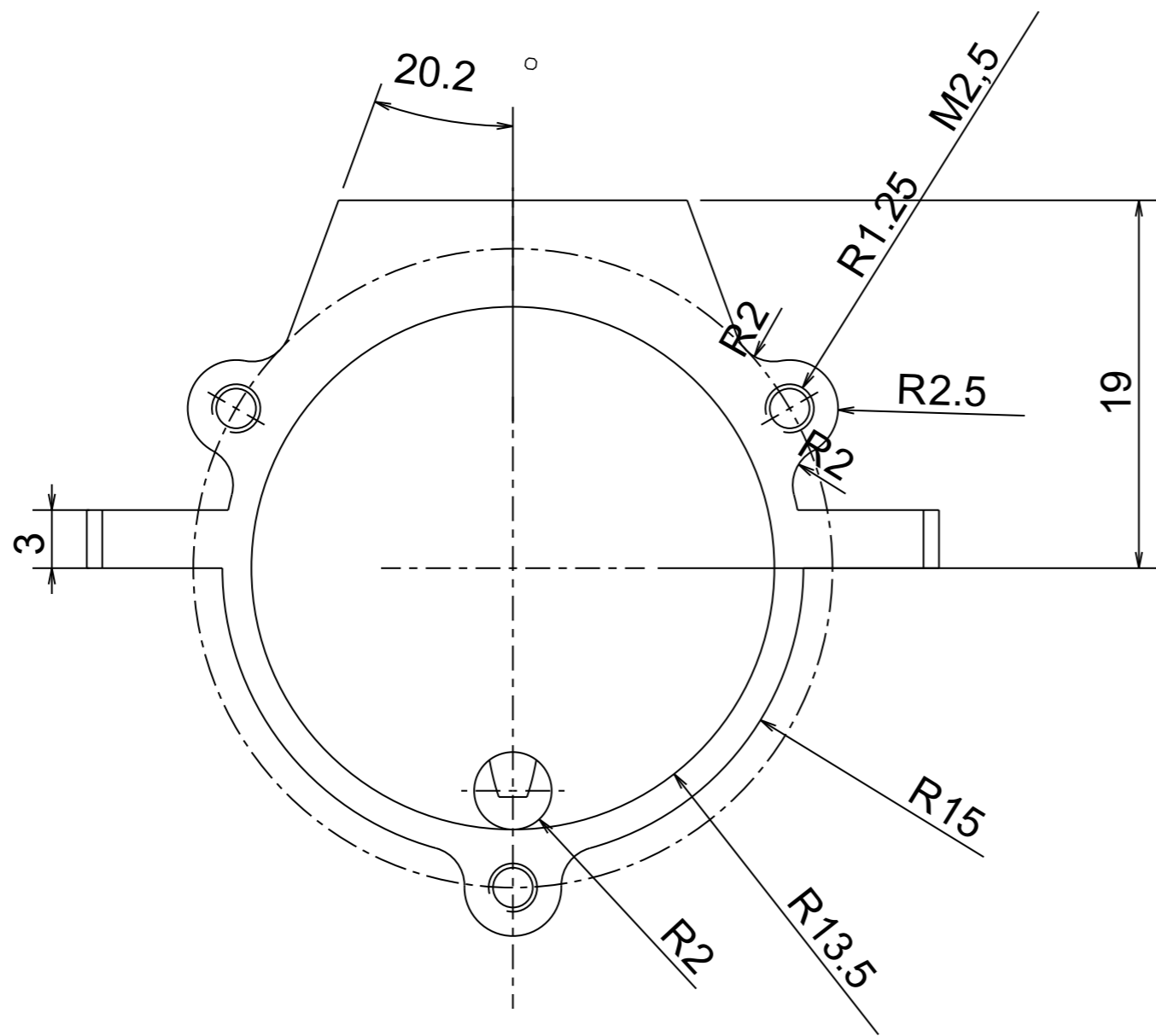
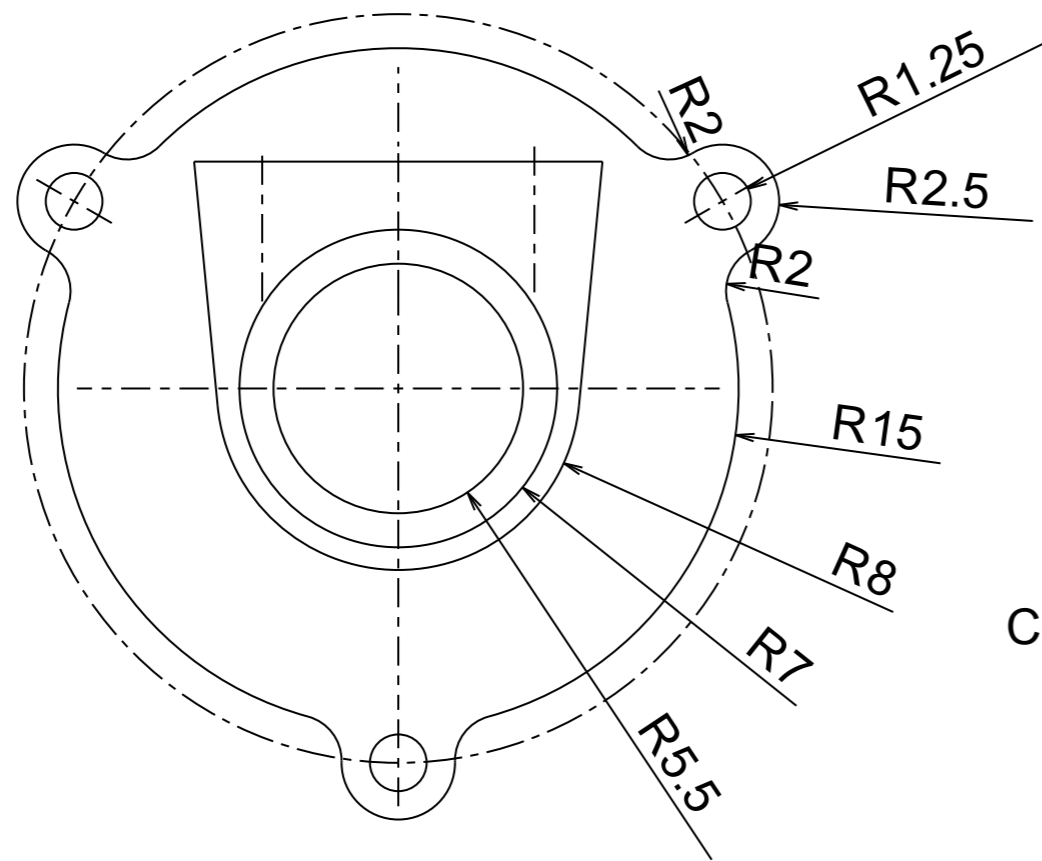


Etheromane

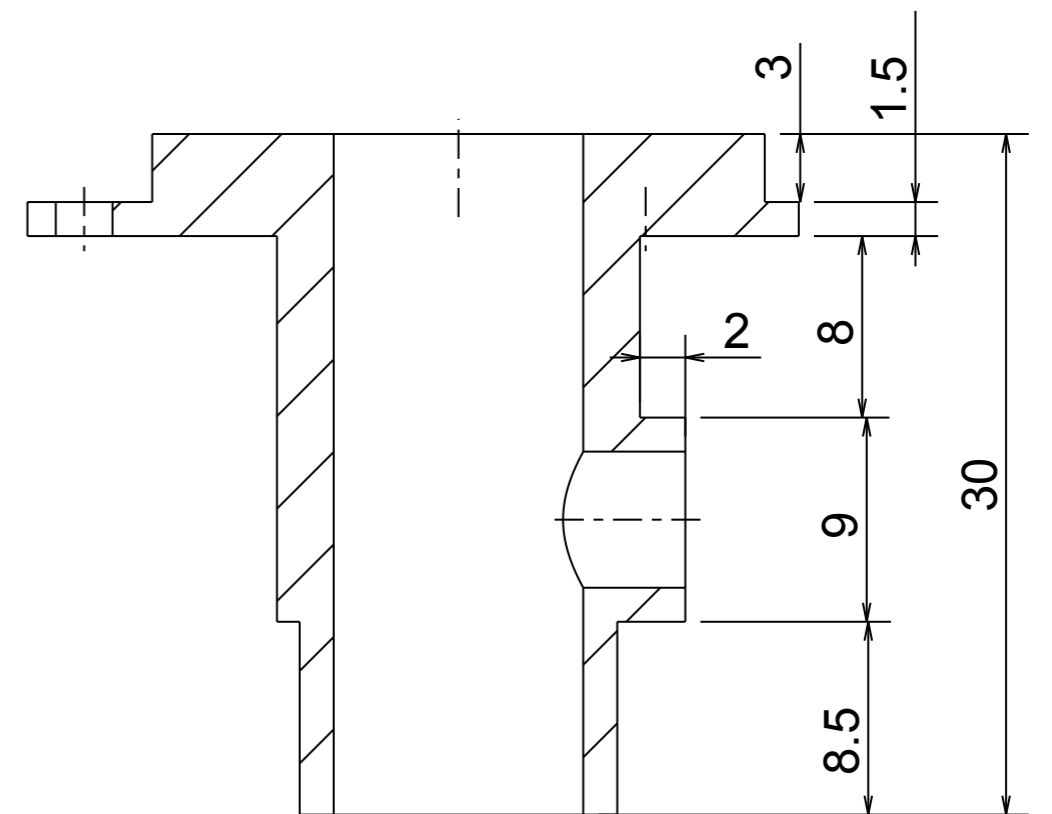
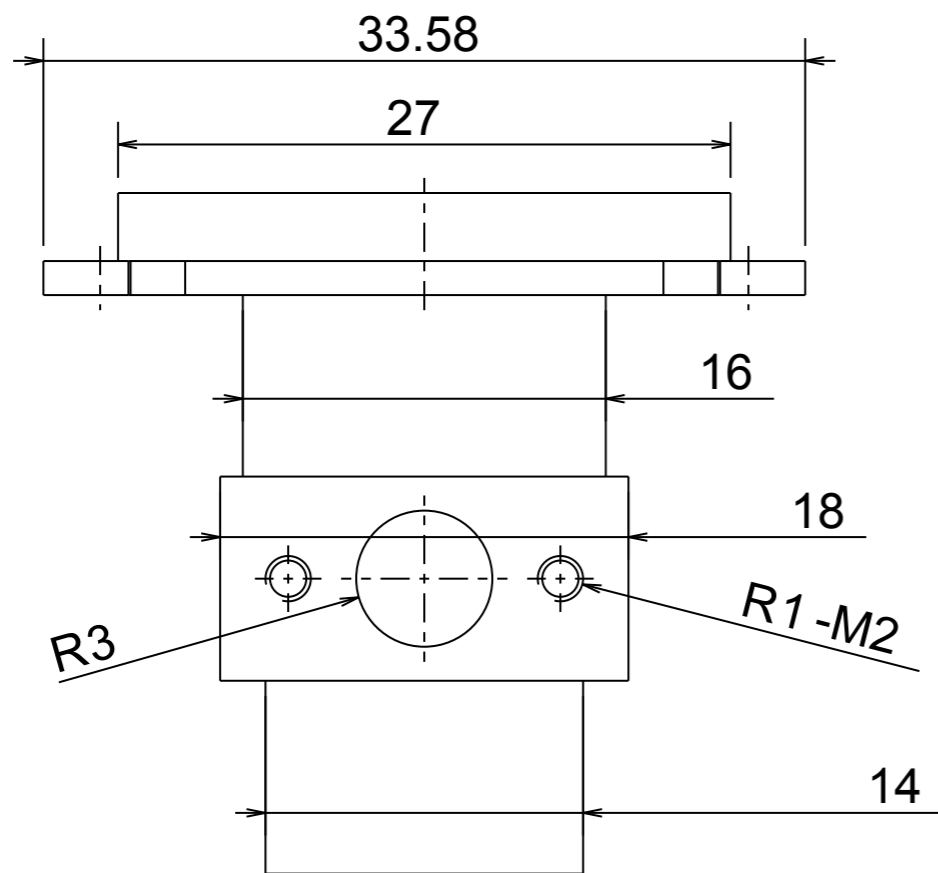
Moteur à auto-allumage
d'après les plans de Gems Suzor



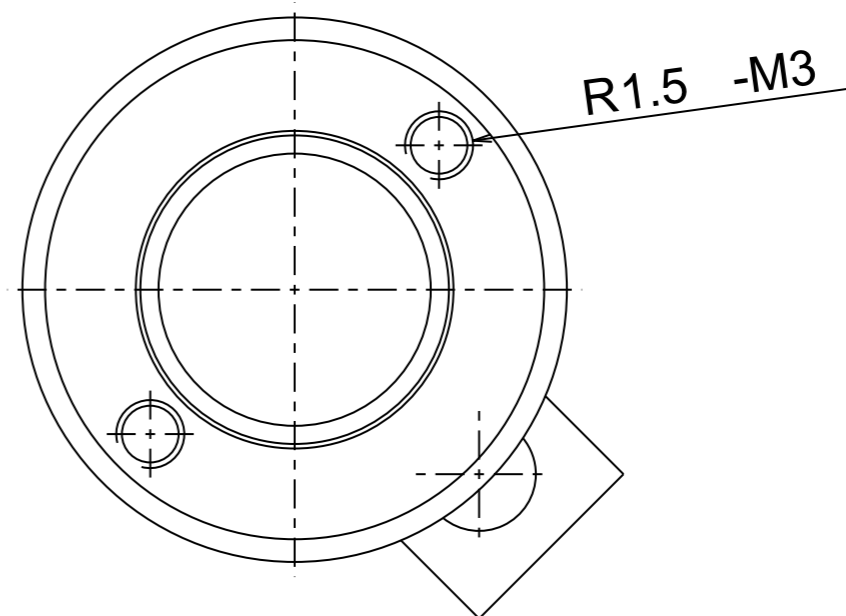
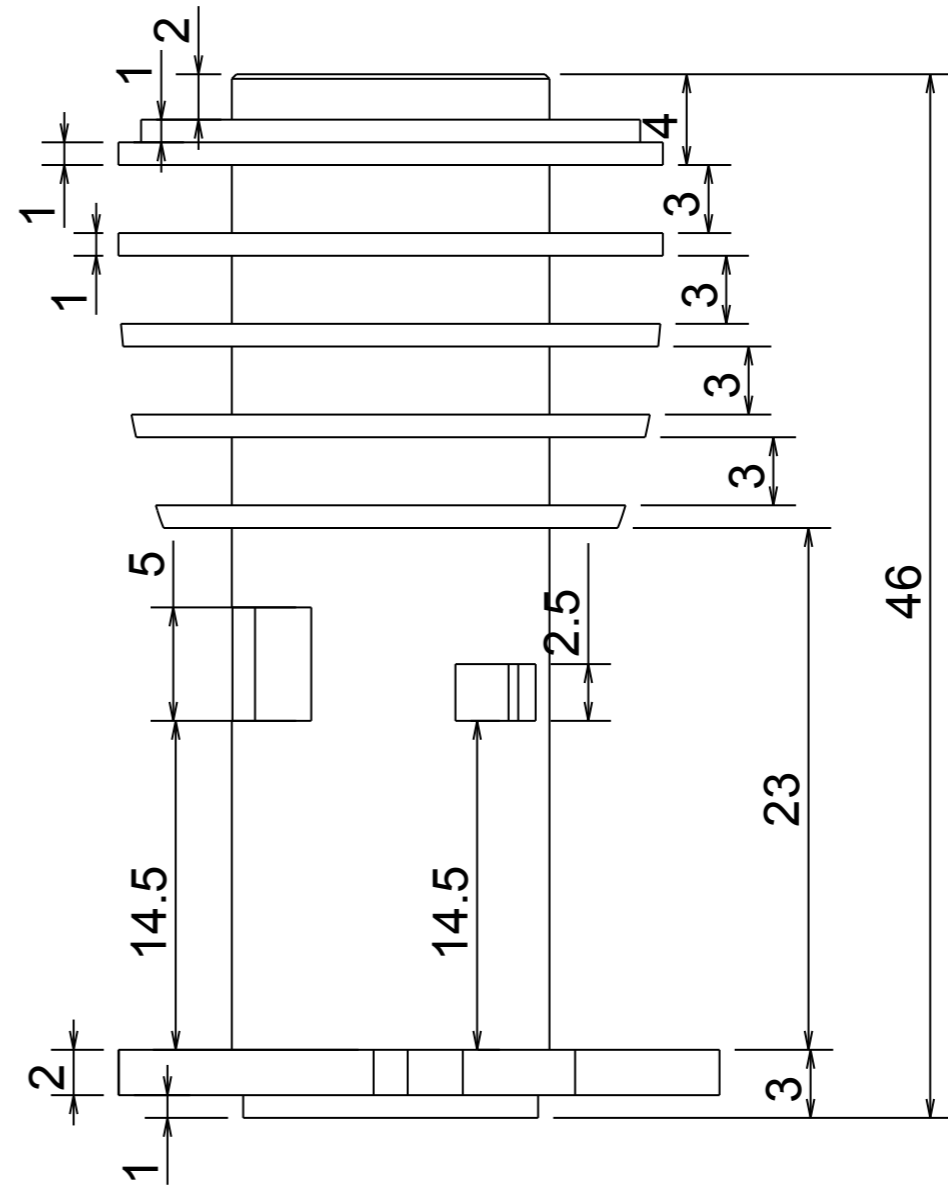
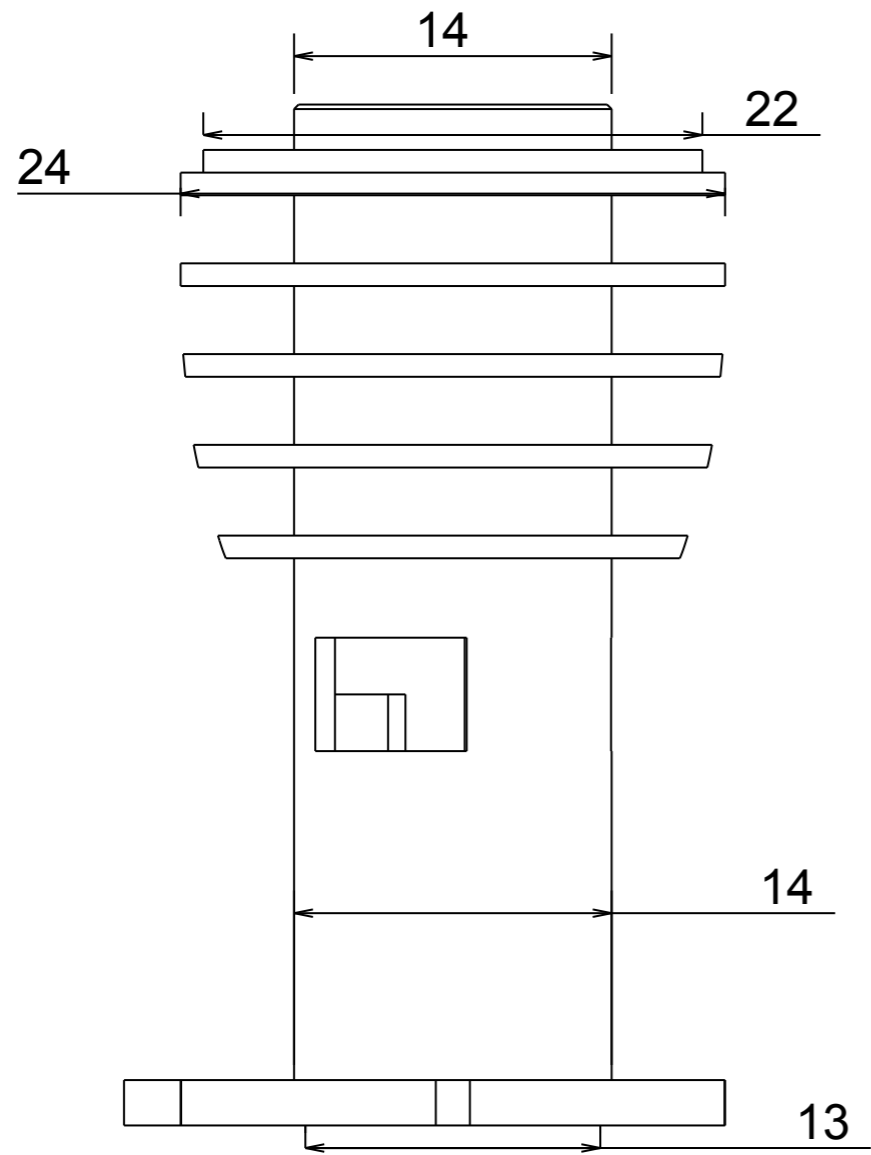
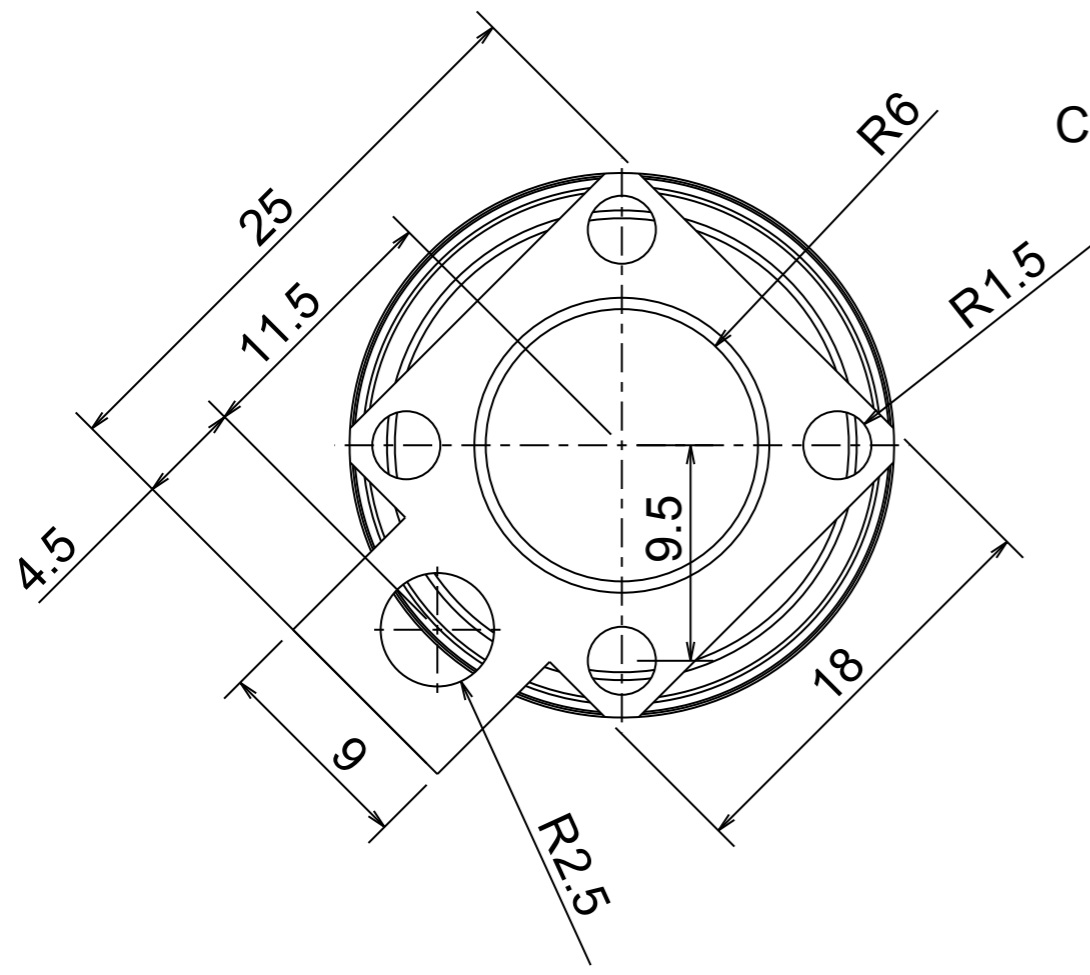
Carter principal

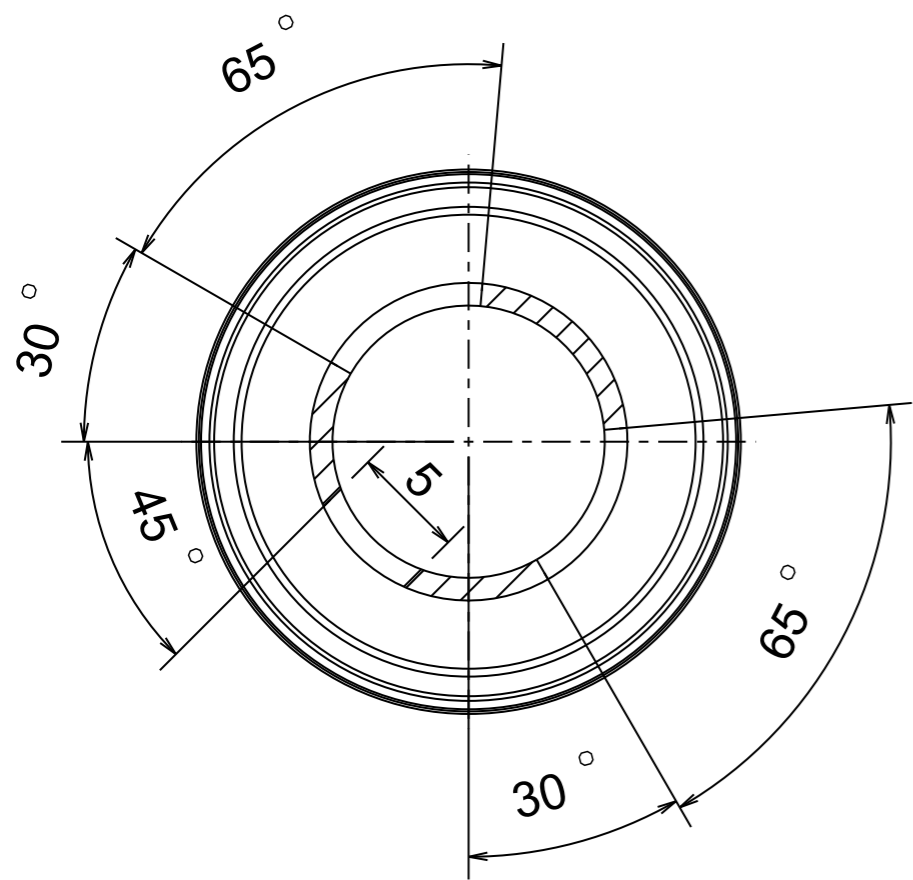


Couvercle carter - Palier vilebrequin

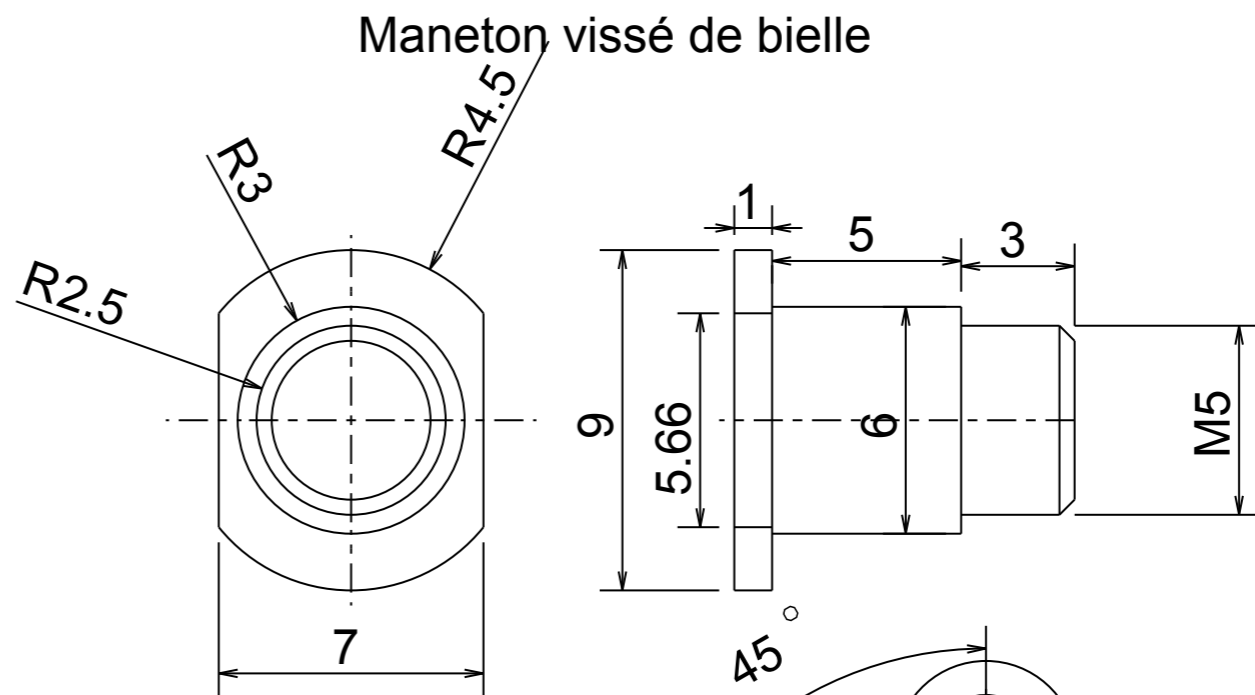


Cylindre

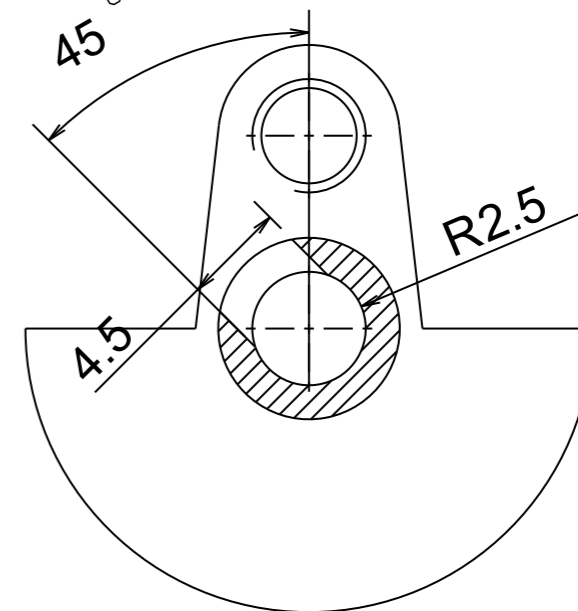




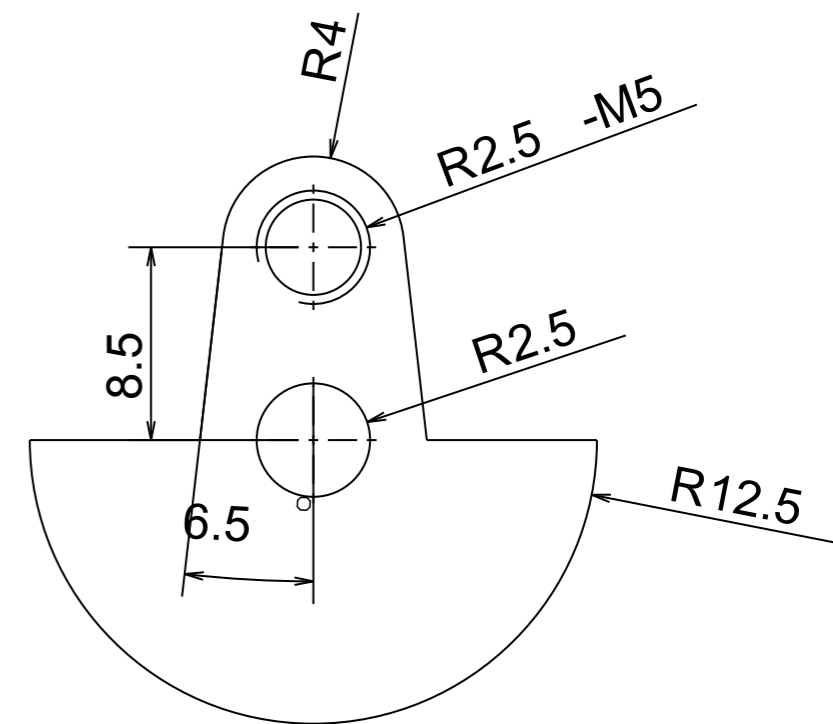
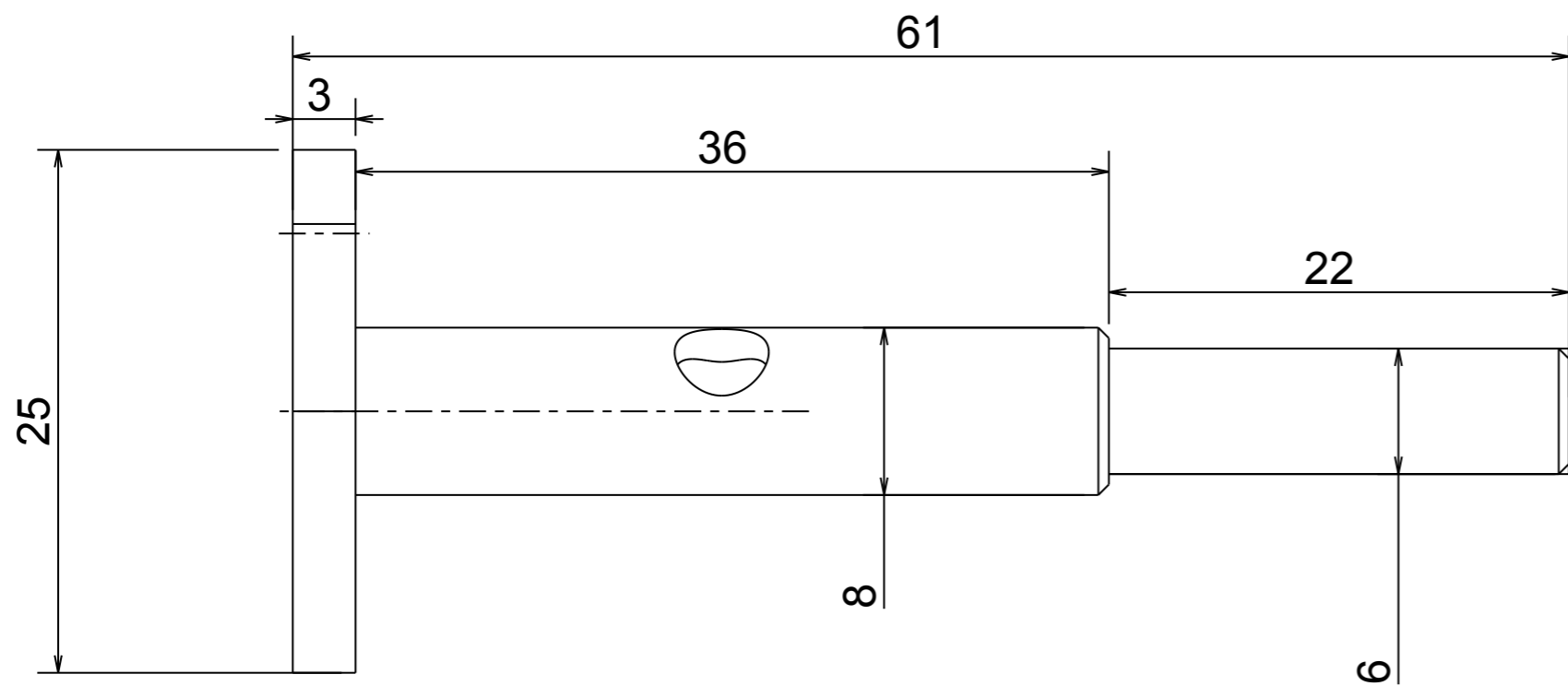
Coupe sur lumières cylindre



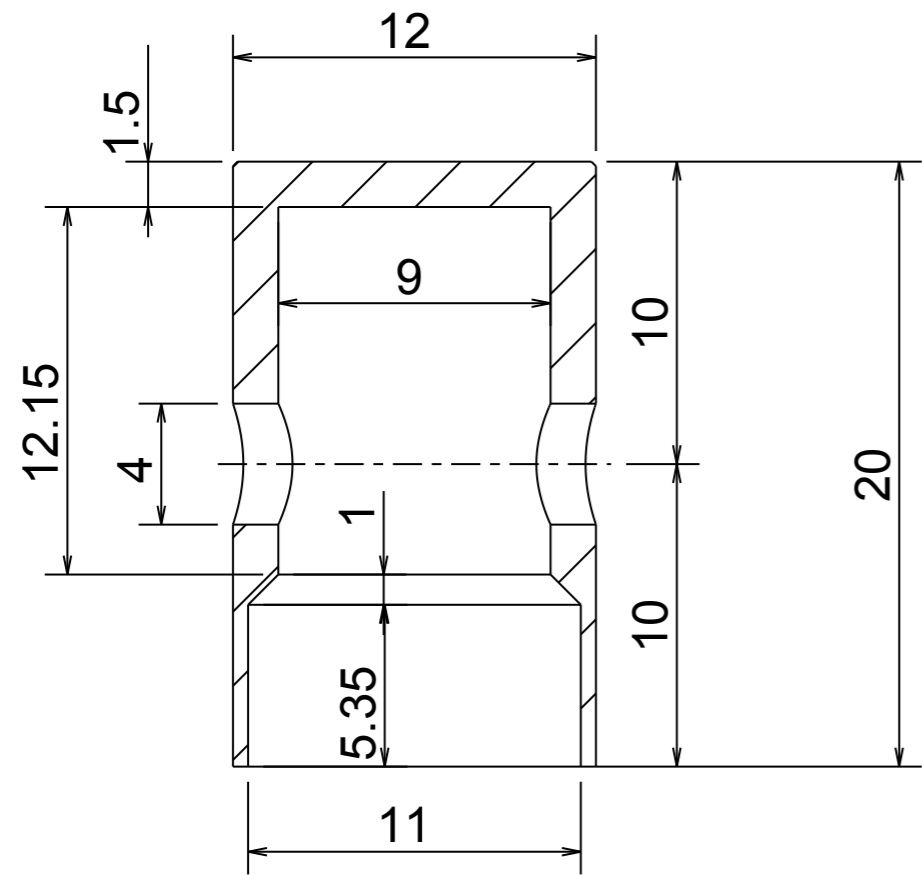
Coupe sur transfert par induction



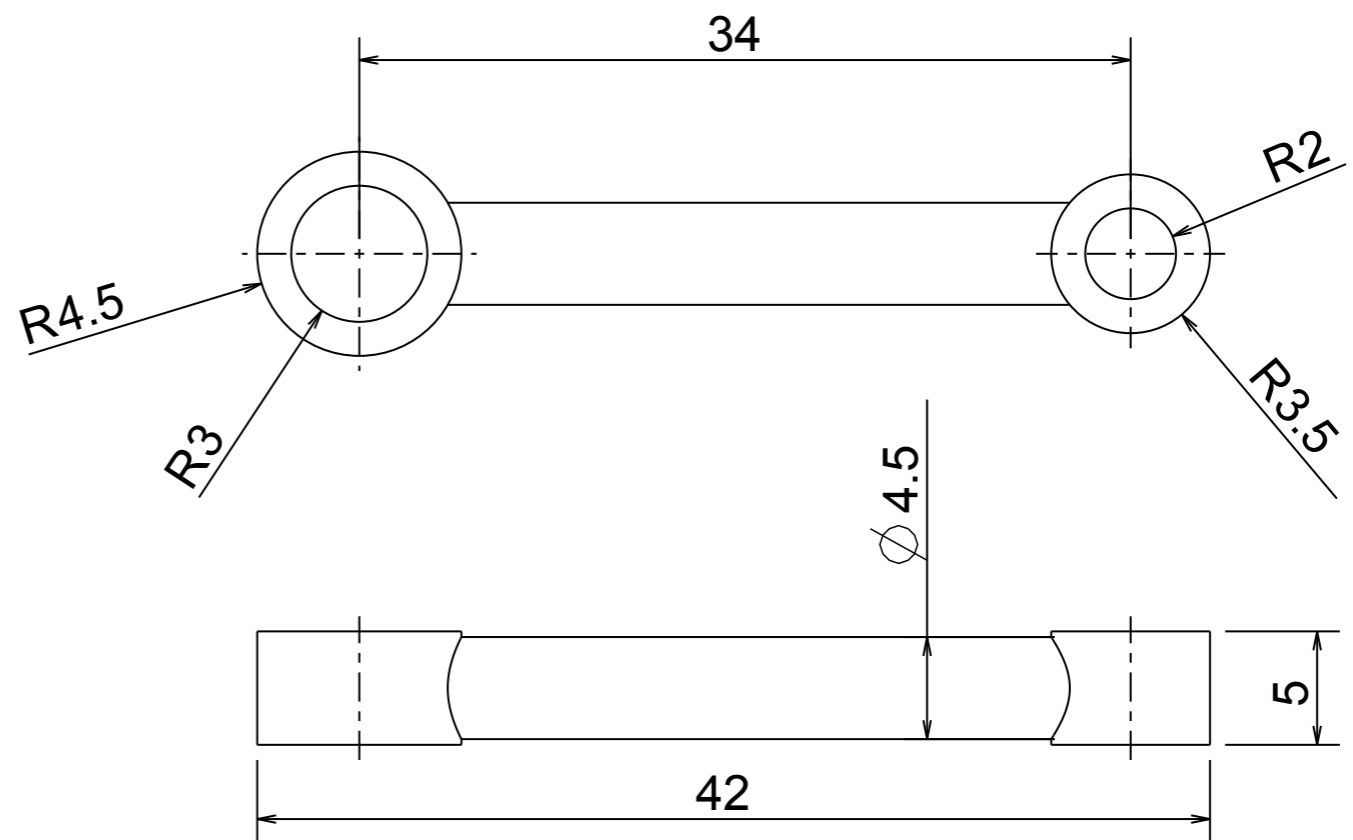
Vilebrequin avec volant de bielle



Volant de bielle

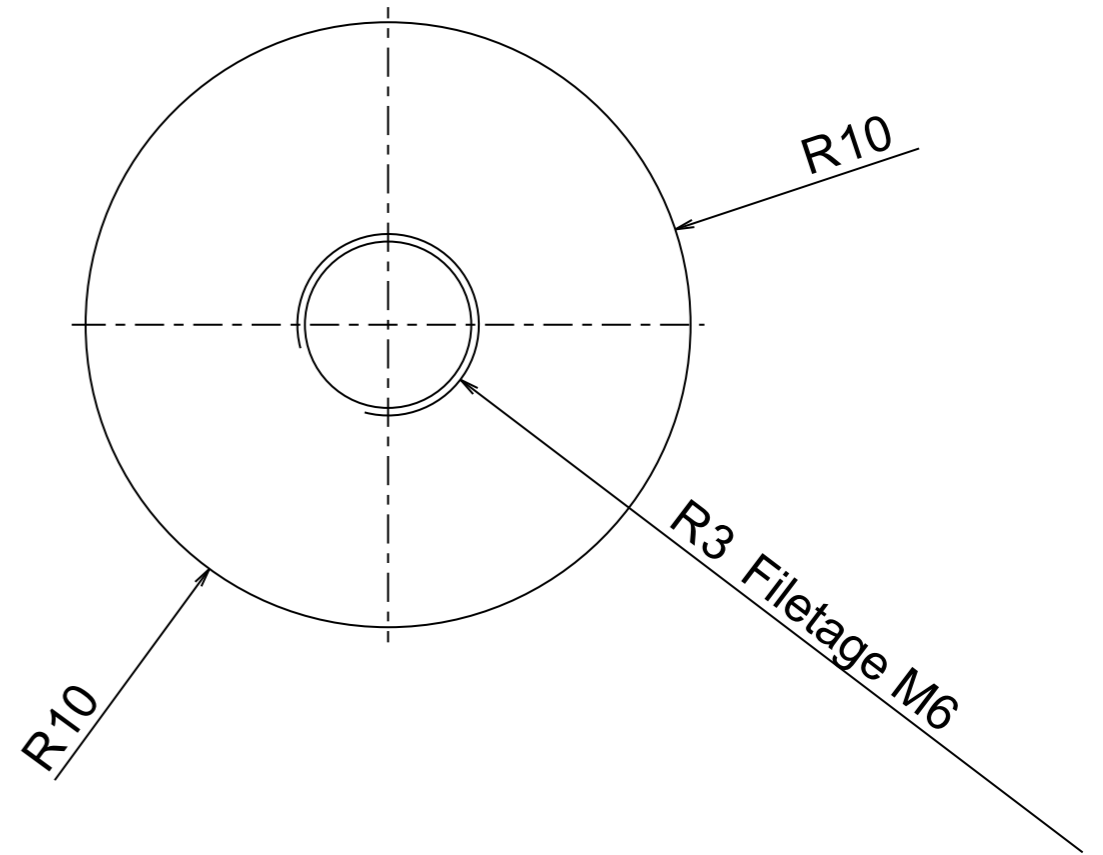
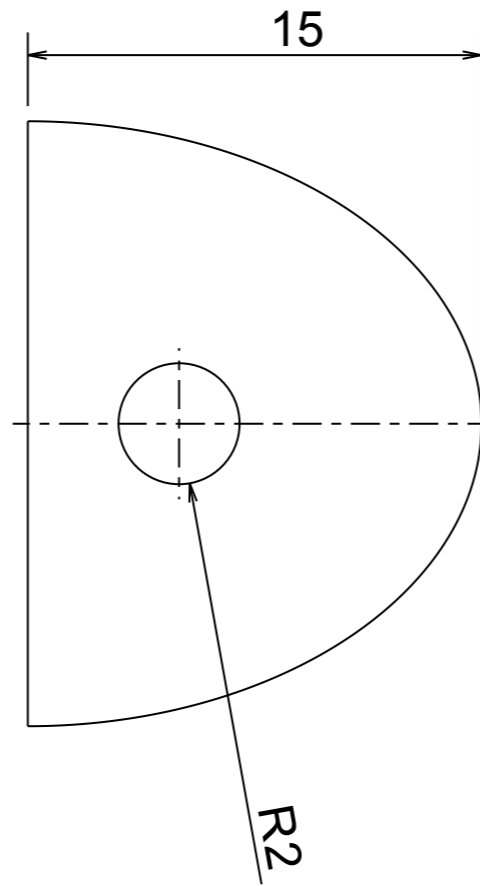
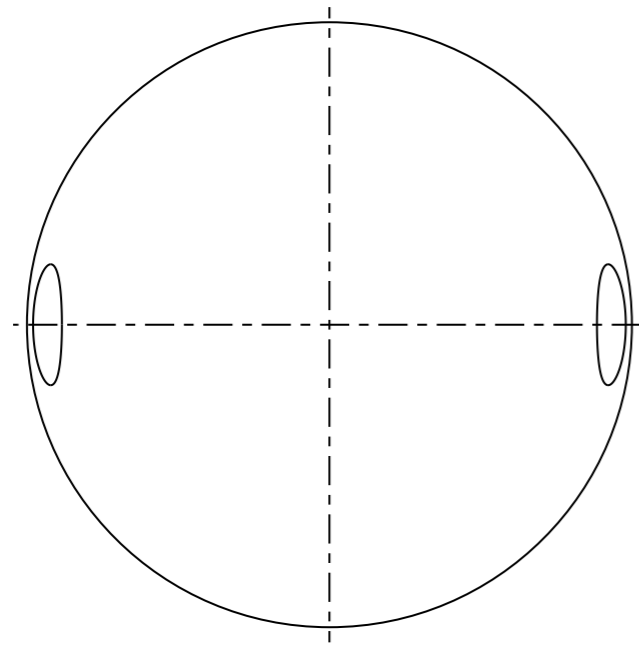


Piston

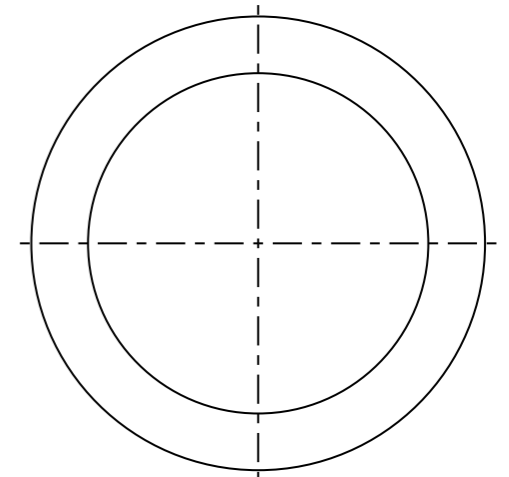
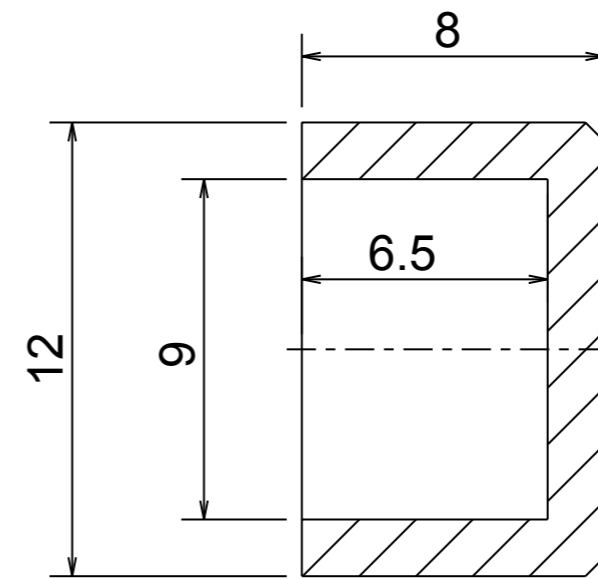
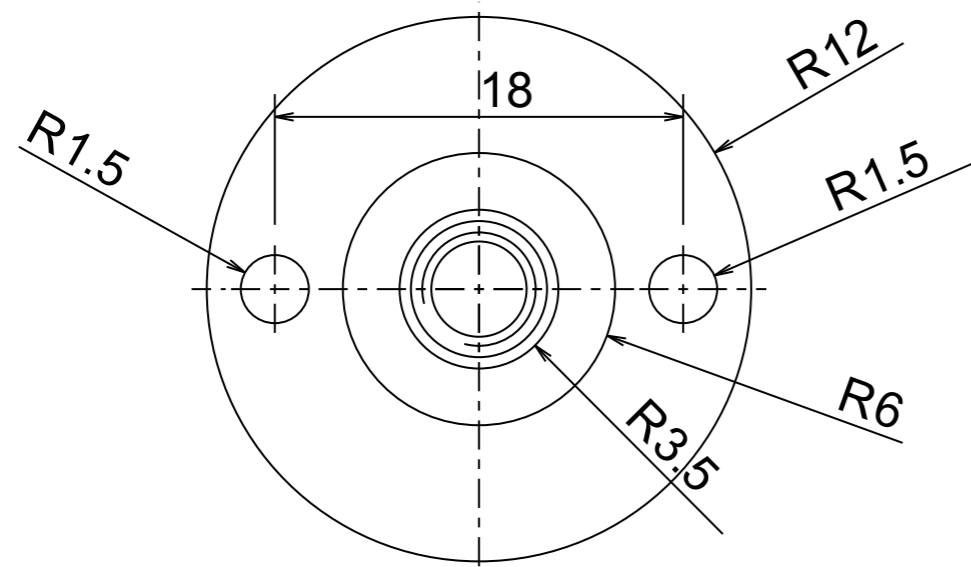
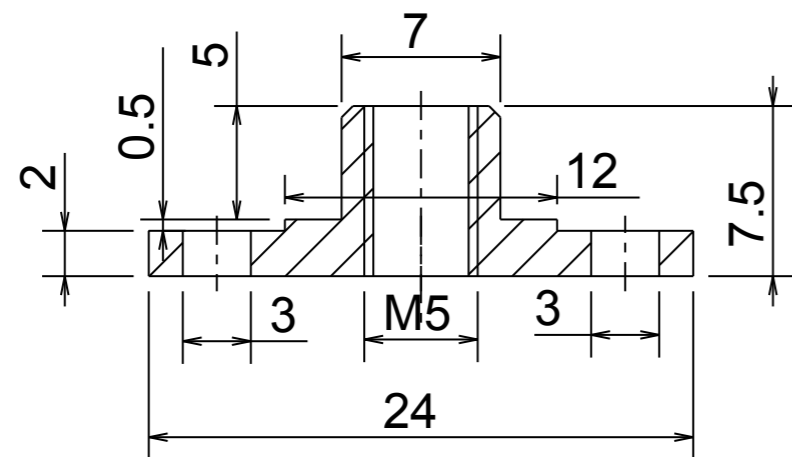


Bielle monobloc

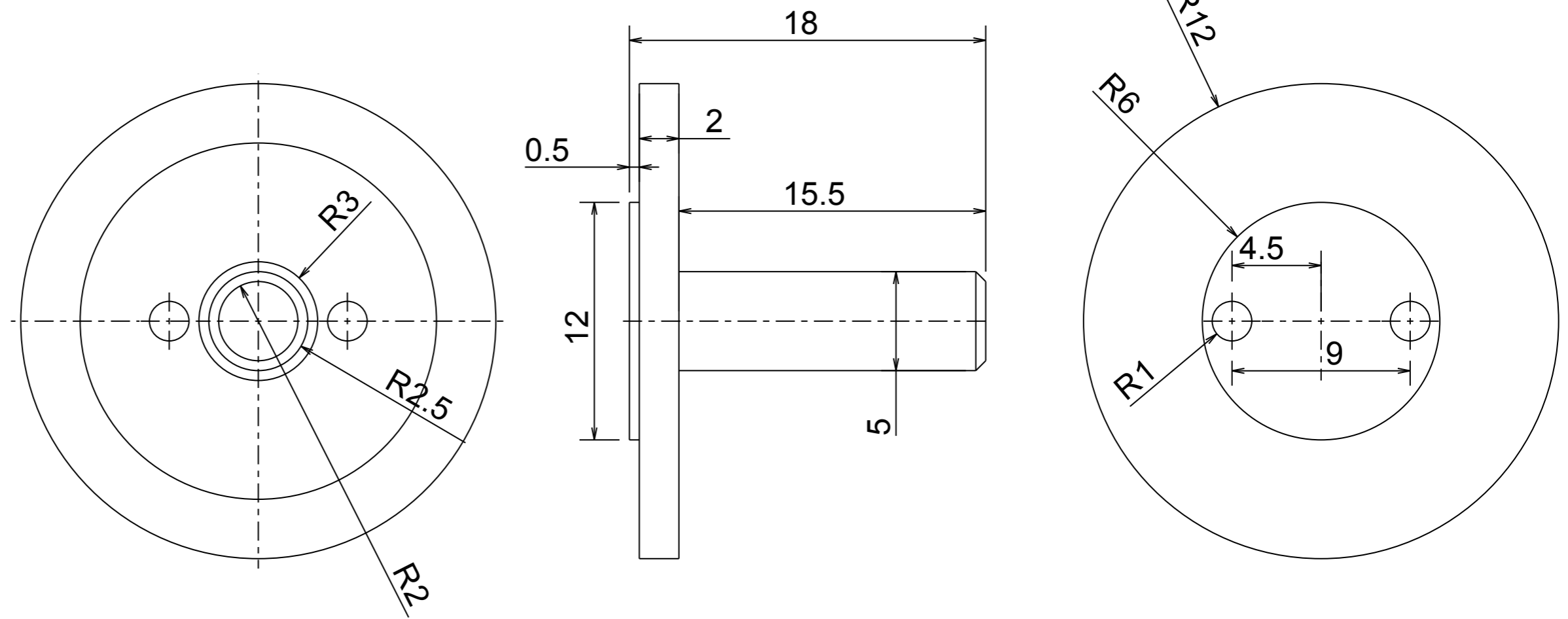
Cône d'hélice



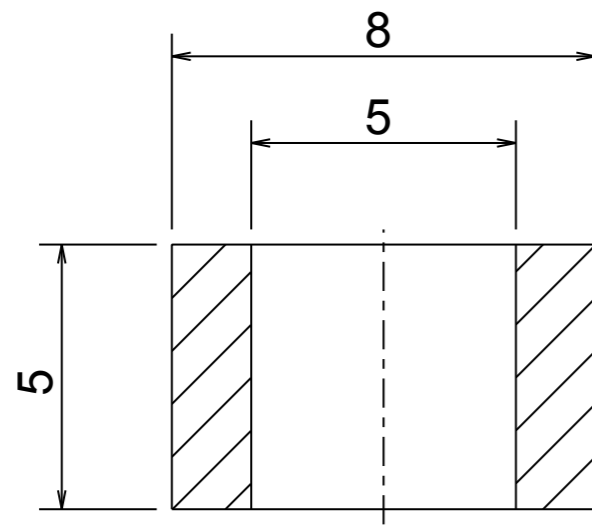
Palier secondaire



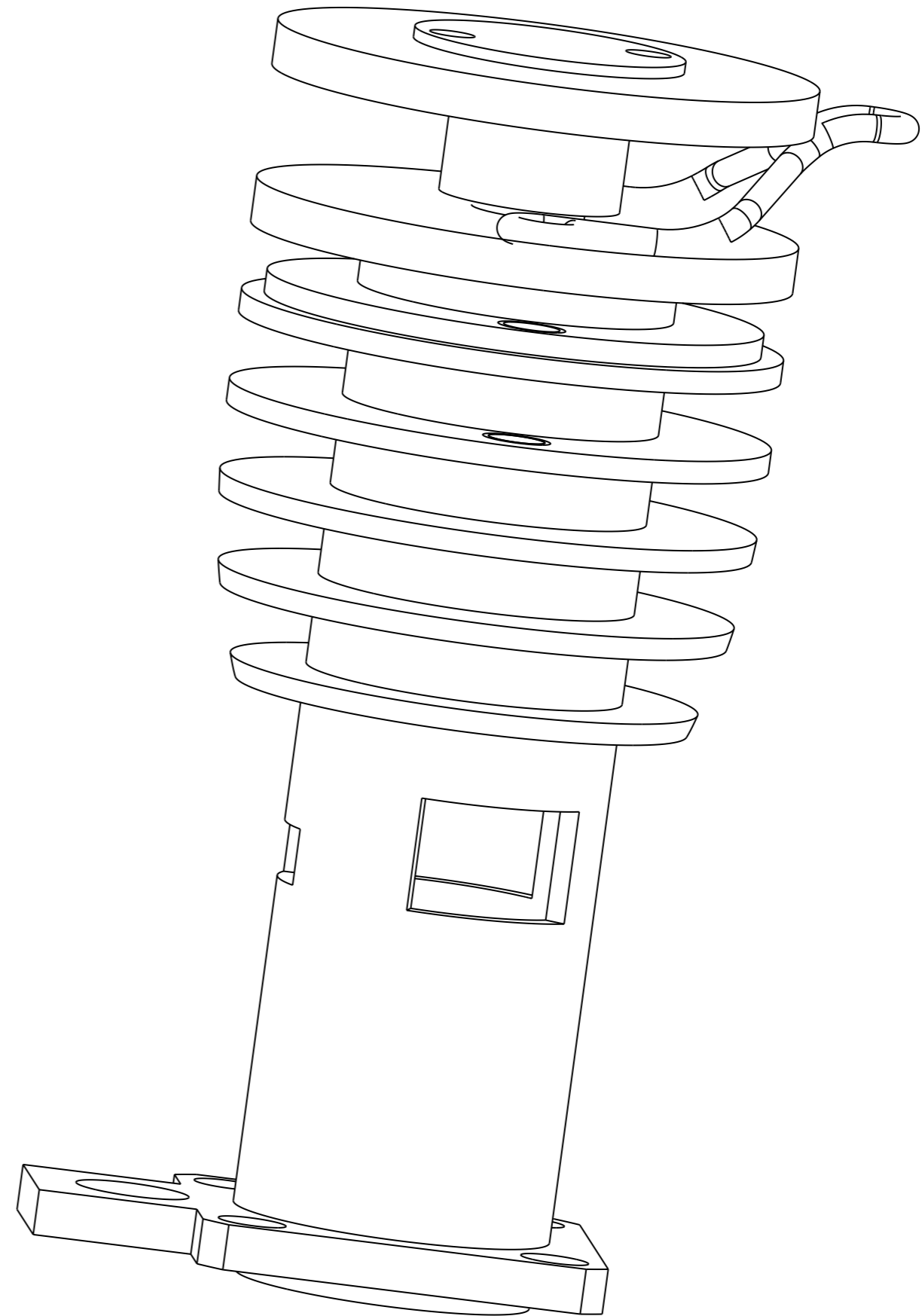
Contre-piston mobile



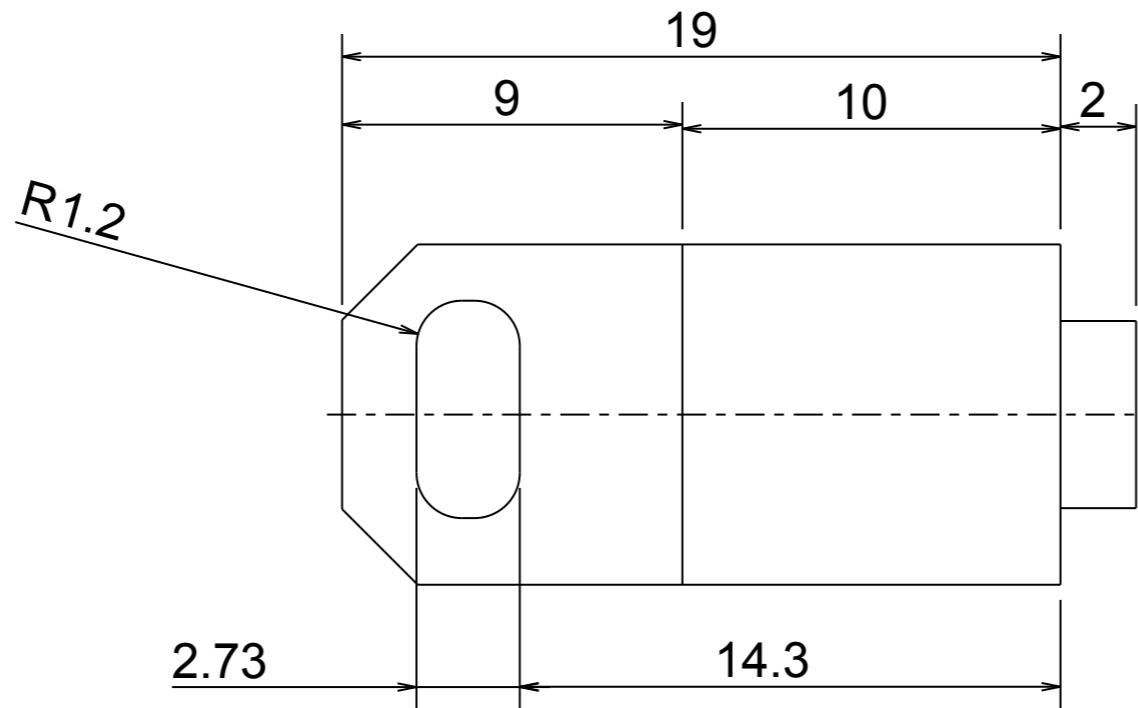
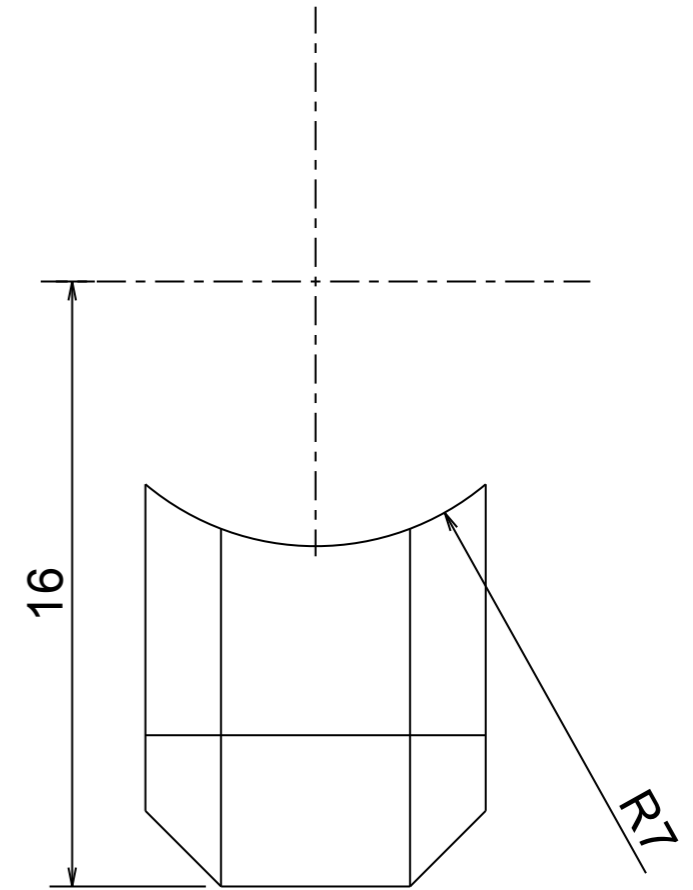
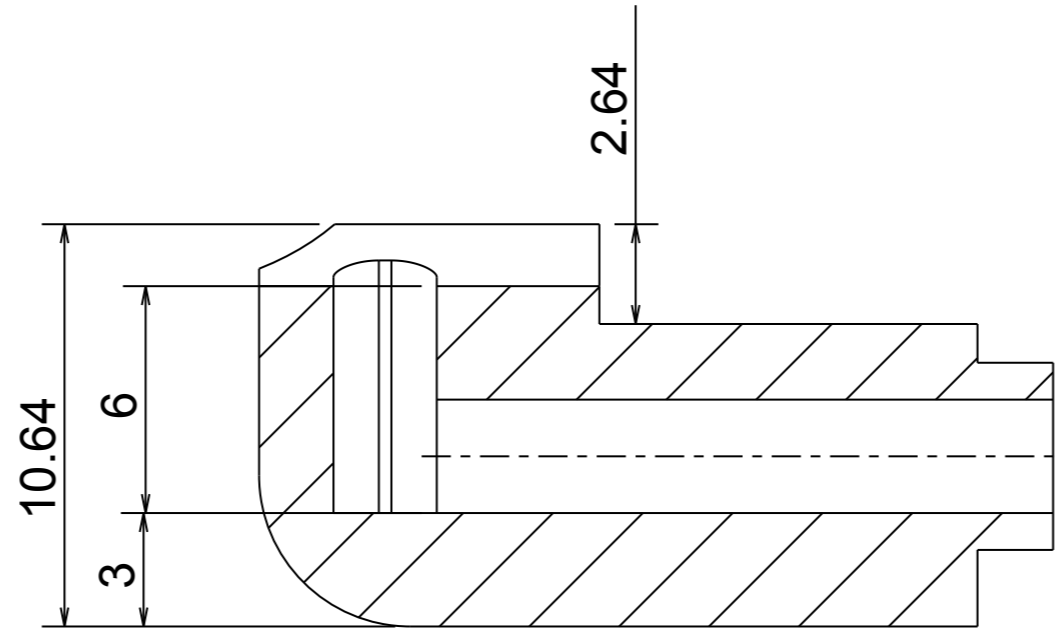
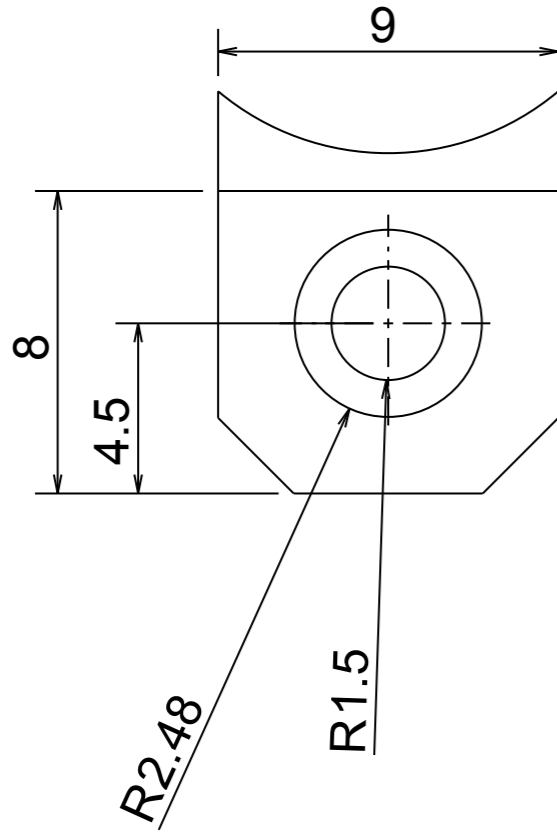
Molette de réglage du contre-piston



Rondelle sécurité



Transfert



Dans son article Gems Suzor parle d'un simple tube recuit écrasé à la pince et soudé à l'étain. Sa solution à l'avantage de la simplicité et de la légèreté. Ici une idée à valider avec ce croquis de pièce